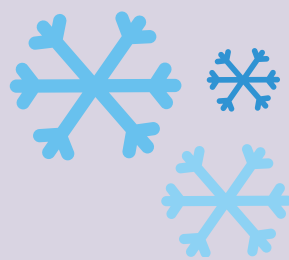
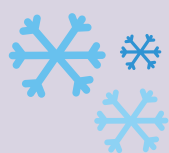


SIDEWALK SNOW CLEARING

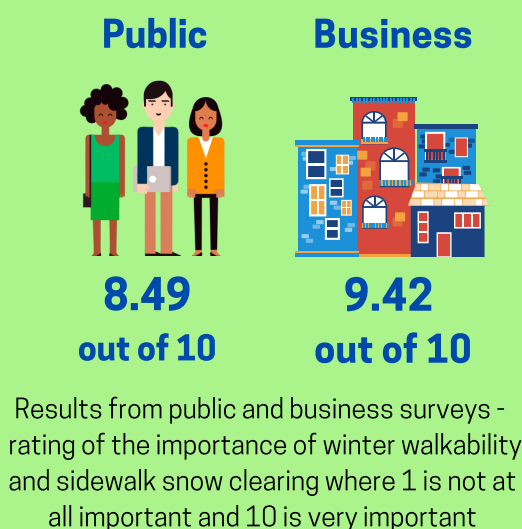


ST. JOHN'S

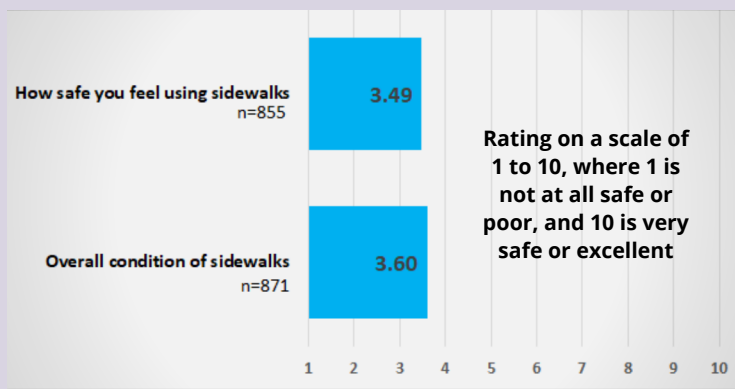
What We Heard From Public Engagement

IMPORTANCE OF WINTER WALKABILITY

Winter walkability is very important to the quality of life of citizens and the operation of businesses and commercial properties. Though walking may not be the primary mode of transport for all citizens, it does factor significantly in their recreation and how they choose to get around the city. The importance of winter walkability is rated higher than average by those aged 18-44, and by post-secondary students, newcomers who have relocated to St. John's from another country in last five years, and visible minorities.



EXPERIENCES ON THE PRIORITY SIDEWALK ROUTES



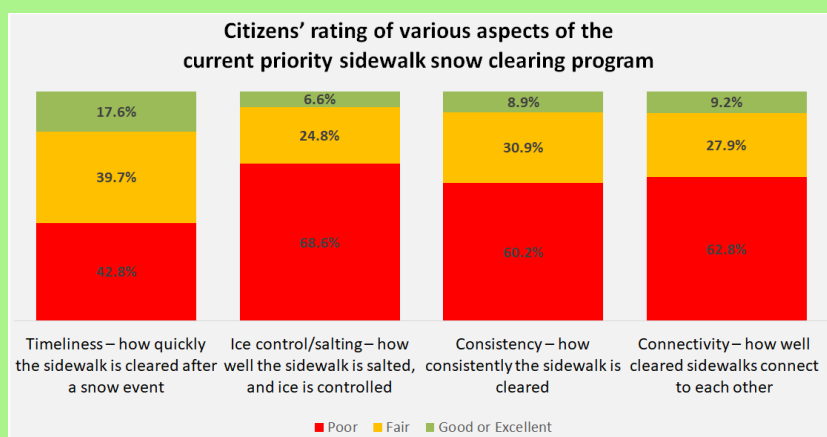
Results from the online public survey

Many citizens change the way they get around in winter. Our public survey indicated:

- 57% limit their activity because of sidewalk conditions
- 71% walk in the street
- 31% must use alternate transportation
- Safety and the overall condition of sidewalks are significant concerns
- Those with mobility challenges feel more restricted in their winter transportation options due to sidewalk conditions

PERSPECTIVES ON CURRENT SNOW CLEARING PROGRAM

Ninety-five percent of the citizens we surveyed had at least some knowledge of the City's priority sidewalk system. We heard that while improvements to snow clearing have been noticeable in the past few years, connectivity, consistency, and ice control were problematic. In terms of timeliness, 60% of the citizens surveyed expect sidewalks to be cleared within 24-72 hours after a snow event.



Results from the online public survey. n=913

SPECIFIC CONCERNS ABOUT SIDEWALK SNOW CLEARING

- Connectivity of routes and inconsistency of clearing i.e., only portions of a route are cleared
- Ice and snow buildup and the need for better ice control
- Inaccessible intersections and crosswalks due to snowbanks and concerns with sight lines
- Street plows pushing snow into cleared sidewalks
- Obstacles impeding sidewalk plows e.g., poles that result in inaccessible sections
- Contractors and citizens pushing snow onto sidewalks
- The inaccessibility of bus stops requiring riders to wait in busy streets
- Connectivity of neighbourhood sidewalk routes in school zones

SUPPORT FOR INVESTMENT

Throughout the public engagement process we heard significant support for:

- Council making winter walkability a priority (92% of citizens and businesses surveyed agree)
- Increasing investment in sidewalk snow clearing (88% of citizens and businesses surveyed agree)

70%

Of citizens surveyed would pay \$25 or less per property per year to support improvements to sidewalk snow clearing

HOW WE COLLECTED FEEDBACK

- Engagestjohns.ca - 2,300 visitors to the project page
- Online public survey (1,019 responses) and business survey (24 responses)
- Meetings with key stakeholders (Metrobus, NLESD, Downtown St. John's, St. John's Board of Trade, Local Immigration Partnership, Empower NL), City's Youth Engagement Action Team and Seniors, Inclusion, and Youth Advisory Committees
- Two virtual public meetings (32 attendees)
- Email and calls to 311
- Social media 'tell us on social' campaign



**MORE DETAILS AT
ENGAGESTJOHNS.CA**