



77 Blackmarsh Road,
St. John's, NL, A1E 1S6
info@leamansigns.ca - 709-753-7545

Project:
Illuminated
Heritage Panel

February 24 2025

SO#: 6467 Q#: 5351

Location:
115 George Street West
Downtown
St. John's, NL

Bursey Excavating
& Development Inc.

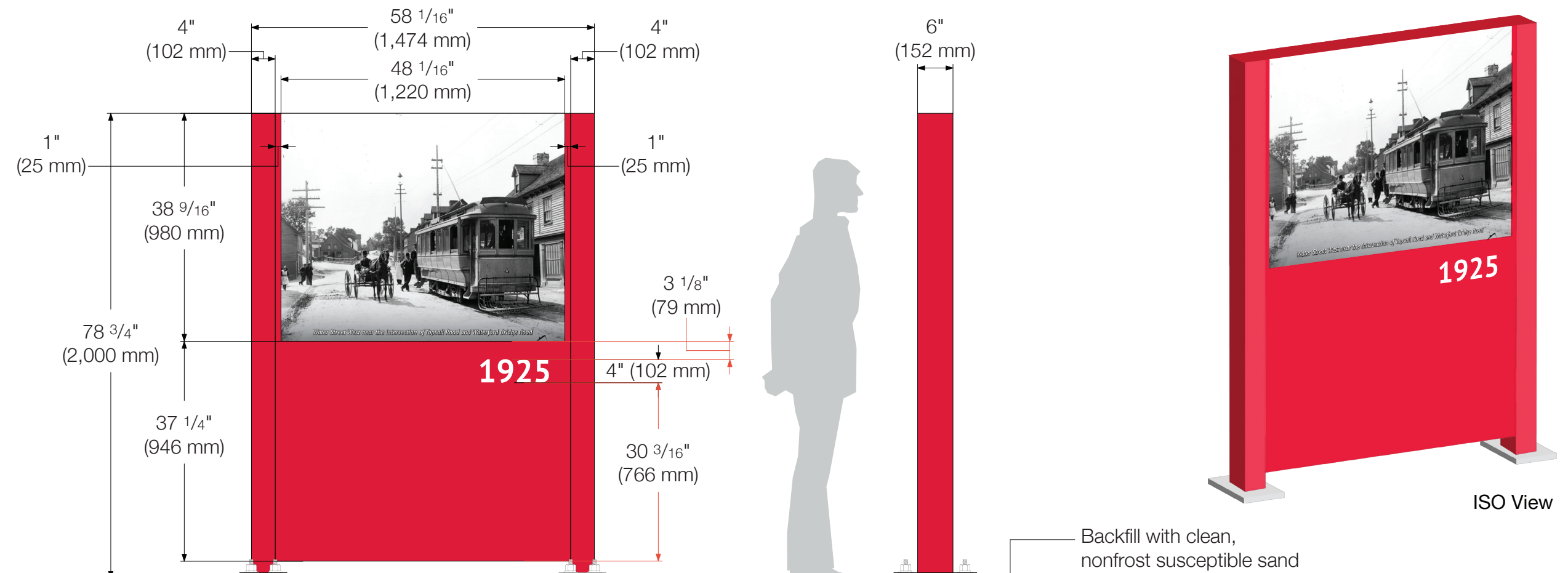
Notes:
- The colours shown here may vary from the finished product due to the transparency of plastics, paints, substrates, viewing on a digital screen or printed proof.
- This artwork is confidential and is the property of Leaman Signs and may not be used in whole or in part without written consent from same.
- Neither seller nor manufacturer shall be liable for any injury, loss or damage direct or consequential arising out of the use of or the inability to use the product. Before using, user shall determine the suitability of the product for its intended use and user assumes all risk and liability whatsoever in connection therewith.

Approval:
Please review, sign, and date this page, indicating your approval. Two rounds of revisions are included in all design and production fees. Revisions beyond the standard two may incur additional charges, at the sole discretion of Leaman Signs. Charges for design and project management will be billed at the current company hourly rate for each service.

Proof approval indicates client's responsibility for all spelling, sizing, colours, and materials indicated within this proof document. Costs associated with any changes after production has commenced will be the sole responsibility of the approving party.

Client Signature: _____

Date: _____



Backfill with clean, nonfrost susceptible sand

3/4" diameter grade 8 anchor bolts, 24" long, HDG

72"

1-25M bar in middle

18"

1.1 ILLUMINATED HERITAGE PANEL
SCALE 1:20 QTY: 3

HERITAGE PANEL: 1/8" Aluminum fastened to aluminum framing structure (Aluminum painted to colour match; TBD) with 4"x6" HSS posts and 8"x14"x1" Steel base plate with 3/4" x 24" HDG grade 8 anchor bolts and decorative stainless steel cap nuts. White vinyl text applied to face.

LED CABINET: Double-sided led cabinet with backlit photo image on both sides. (Historic photo file to be provided by owner's representative)

CONCRETE BASE: 18" Round sonotubes, 6' deep with 1-25 m Bar in middle. 25Mpa Concrete double wrapped with 6mm poly to aid against adfreeze uplift.



77 Blackmarsh Road,
St. John's, NL, A1E 1S6
info@leamansigns.ca - 709-753-7545

Project:
Illuminated
Heritage Panel

February 24 2025

SO#: 6467 Q#: 5351

Location:
115 George Street West
Downtown
St. John's, NL

Bursey Excavating
& Development Inc.

Notes:

- The colours shown here may vary from the finished product due to the transparency of plastics, paints, substrates, viewing on a digital screen or printed proof.
- This artwork is confidential and is the property of Leaman Signs and may not be used in whole or in part without written consent from same.
- Neither seller nor manufacturer shall be liable for any injury, loss or damage direct or consequential arising out of the use of or the inability to use the product. Before using, user shall determine the suitability of the product for its intended use and user assumes all risk and liability whatsoever in connection therewith.

Approval:

Please review, sign, and date this page, indicating your approval. Two rounds of revisions are included in all design and production fees. Revisions beyond the standard two may incur additional charges, at the sole discretion of Leaman Signs. Charges for design and project management will be billed at the current company hourly rate for each service.

Proof approval indicates client's responsibility for all spelling, sizing, colours, and materials indicated within this proof document. Costs associated with any changes after production has commenced will be the sole responsibility of the approving party.

Client Signature: _____

Date: _____

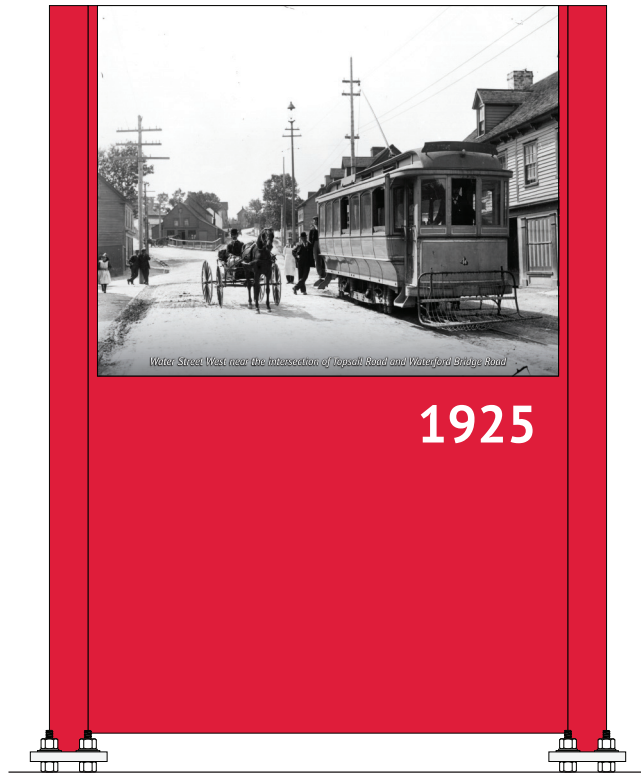
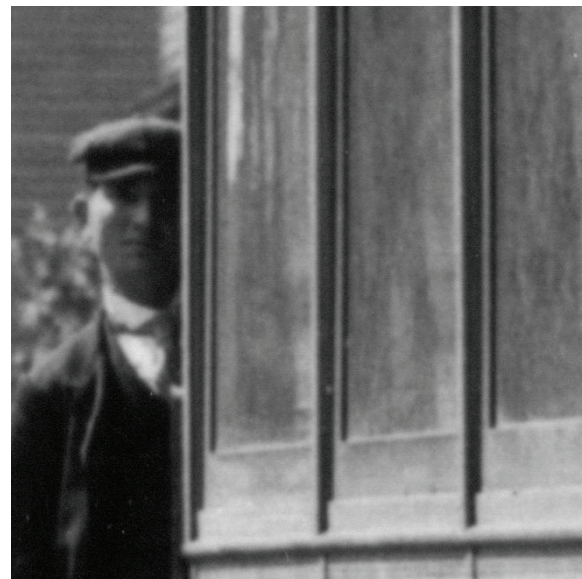


Photo 1 - 3" Square
Scale 1:1
220ppi*



Original Photo Resolution: 1200dpi

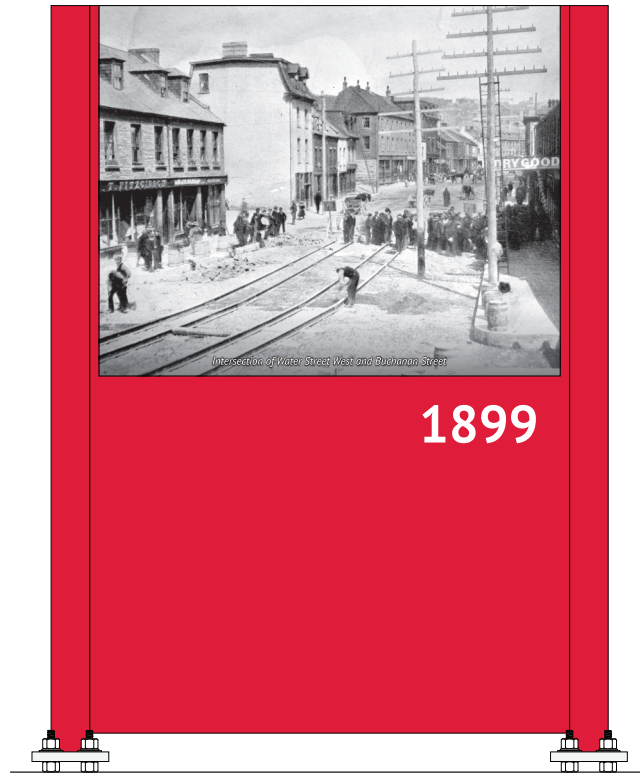


Photo 3 - 3" Square
Scale 1:1
222ppi*



Original Photo Resolution: 1200dpi

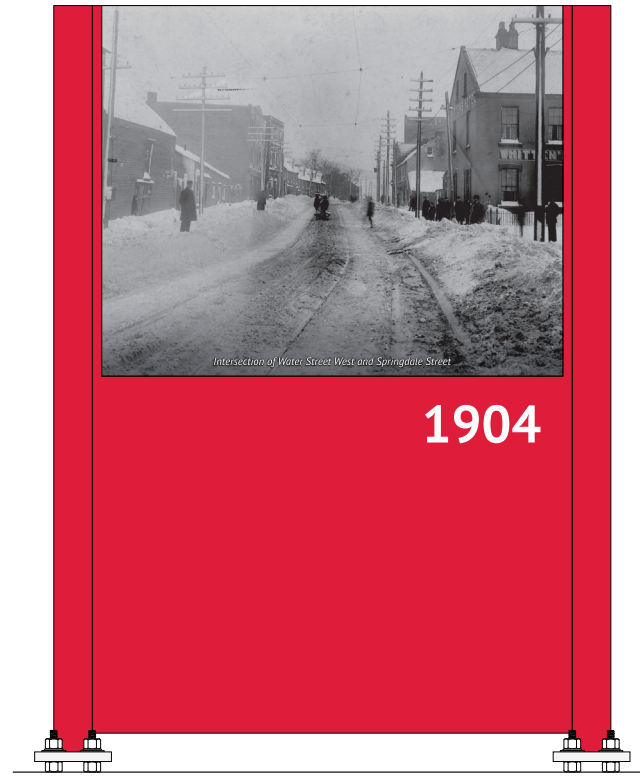
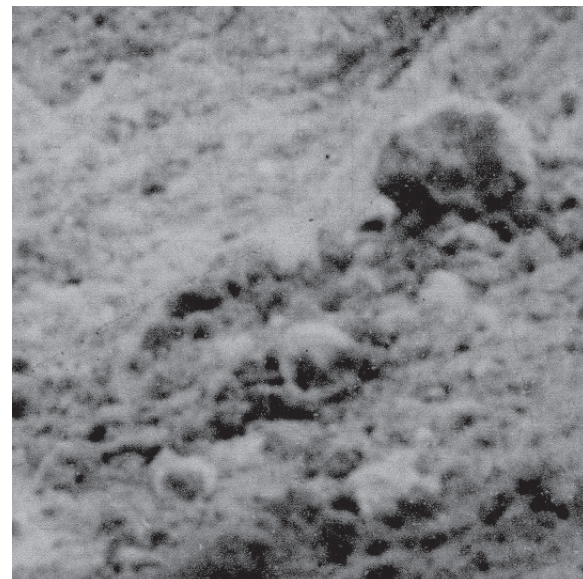


Photo 2 - 3" Square
Scale 1:1
180ppi*



Original Photo Resolution: 1200dpi



77 Blackmarsh Road,
St. John's, NL, A1E 1S6
info@leamansigns.ca - 709-753-7545

Project:
Illuminated
Heritage Panel

February 24 2025

SO#: 6467 Q#: 5351

Location:
115 George Street West
Downtown
St. John's, NL

Bursey Excavating
& Development Inc.

Notes:

- The colours shown here may vary from the finished product due to the transparency of plastics, paints, substrates, viewing on a digital screen or printed proof.
- This artwork is confidential and is the property of Leaman Signs and may not be used in whole or in part without written consent from same.
- Neither seller nor manufacturer shall be liable for any injury, loss or damage direct or consequential arising out of the use of or the inability to use the product. Before using, user shall determine the suitability of the product for its intended use and user assumes all risk and liability whatsoever in connection therewith.

Approval:

Please review, sign, and date this page, indicating your approval. Two rounds of revisions are included in all design and production fees. Revisions beyond the standard two may incur additional charges, at the sole discretion of Leaman Signs. Charges for design and project management will be billed at the current company hourly rate for each service.

Proof approval indicates client's responsibility for all spelling, sizing, colours, and materials indicated within this proof document. Costs associated with any changes after production has commenced will be the sole responsibility of the approving party.

Client Signature: _____

Date: _____



Water Street West near the intersection of Topsail Road and Waterford Bridge Road

1.1 ILLUMINATED HERITAGE PANEL - 1925



77 Blackmarsh Road,
St. John's, NL, A1E 1S6
info@leamansigns.ca - 709-753-7545

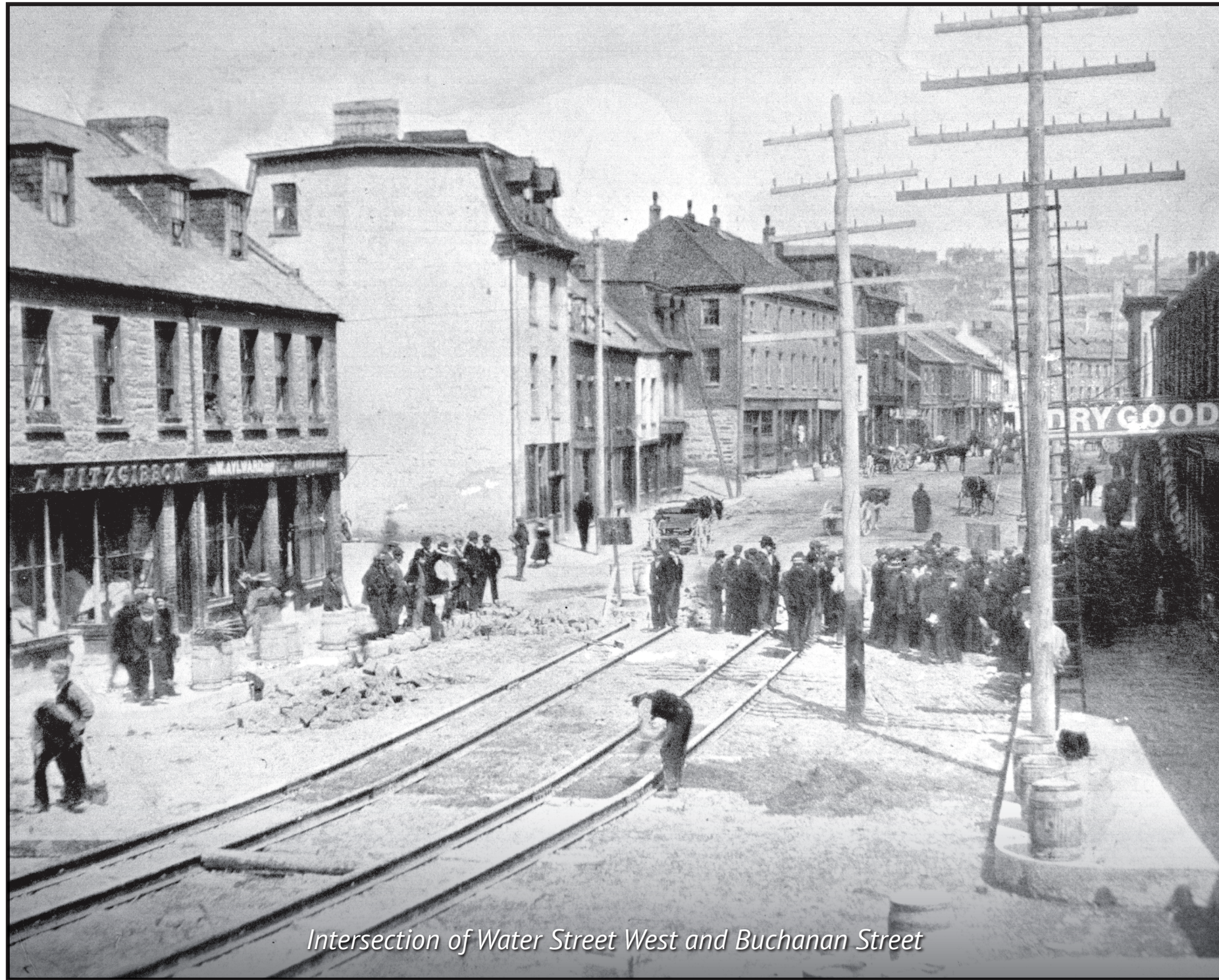
Project:
Illuminated
Heritage Panel

February 24 2025

SO#: 6467 Q#: 5351

Location:
115 George Street West
Downtown
St. John's, NL

Bursey Excavating
& Development Inc.



Intersection of Water Street West and Buchanan Street

1.1 ILLUMINATED HERITAGE PANEL - 1899

Notes:
- The colours shown here may vary from the finished product due to the transparency of plastics, paints, substrates, viewing on a digital screen or printed proof.
- This artwork is confidential and is the property of Leaman Signs and may not be used in whole or in part without written consent from same.
- Neither seller nor manufacturer shall be liable for any injury, loss or damage direct or consequential arising out of the use of or the inability to use the product. Before using, user shall determine the suitability of the product for its intended use and user assumes all risk and liability whatsoever in connection therewith.

Approval:
Please review, sign, and date this page, indicating your approval. Two rounds of revisions are included in all design and production fees. Revisions beyond the standard two may incur additional charges, at the sole discretion of Leaman Signs. Charges for design and project management will be billed at the current company hourly rate for each service.

Proof approval indicates client's responsibility for all spelling, sizing, colours, and materials indicated within this proof document. Costs associated with any changes after production has commenced will be the sole responsibility of the approving party.

Client Signature: _____

Date: _____



77 Blackmarsh Road,
St. John's, NL, A1E 1S6
info@leamansigns.ca - 709-753-7545

Project:
Illuminated
Heritage Panel

February 24 2025

SO#: 6467 Q#: 5351

Location:
115 George Street West
Downtown
St. John's, NL

Bursey Excavating
& Development Inc.

Notes:

- The colours shown here may vary from the finished product due to the transparency of plastics, paints, substrates, viewing on a digital screen or printed proof.
- This artwork is confidential and is the property of Leaman Signs and may not be used in whole or in part without written consent from same.
- Neither seller nor manufacturer shall be liable for any injury, loss or damage direct or consequential arising out of the use of or the inability to use the product. Before using, user shall determine the suitability of the product for its intended use and user assumes all risk and liability whatsoever in connection therewith.

Approval:

Please review, sign, and date this page, indicating your approval. Two rounds of revisions are included in all design and production fees. Revisions beyond the standard two may incur additional charges, at the sole discretion of Leaman Signs. Charges for design and project management will be billed at the current company hourly rate for each service.

Proof approval indicates client's responsibility for all spelling, sizing, colours, and materials indicated within this proof document. Costs associated with any changes after production has commenced will be the sole responsibility of the approving party.

Client Signature: _____

Date: _____



Intersection of Water Street West and Springdale Street

1.1 ILLUMINATED HERITAGE PANEL - 1904



77 Blackmarsh Road,
St. John's, NL, A1E 1S6
info@leamansigns.ca - 709-753-7545

Project:
Illuminated
Heritage Panel

February 24 2025

SO#: 6467 Q#: 5351

Location:
115 George Street West
Downtown
St. John's, NL

Bursey Excavating
& Development Inc.

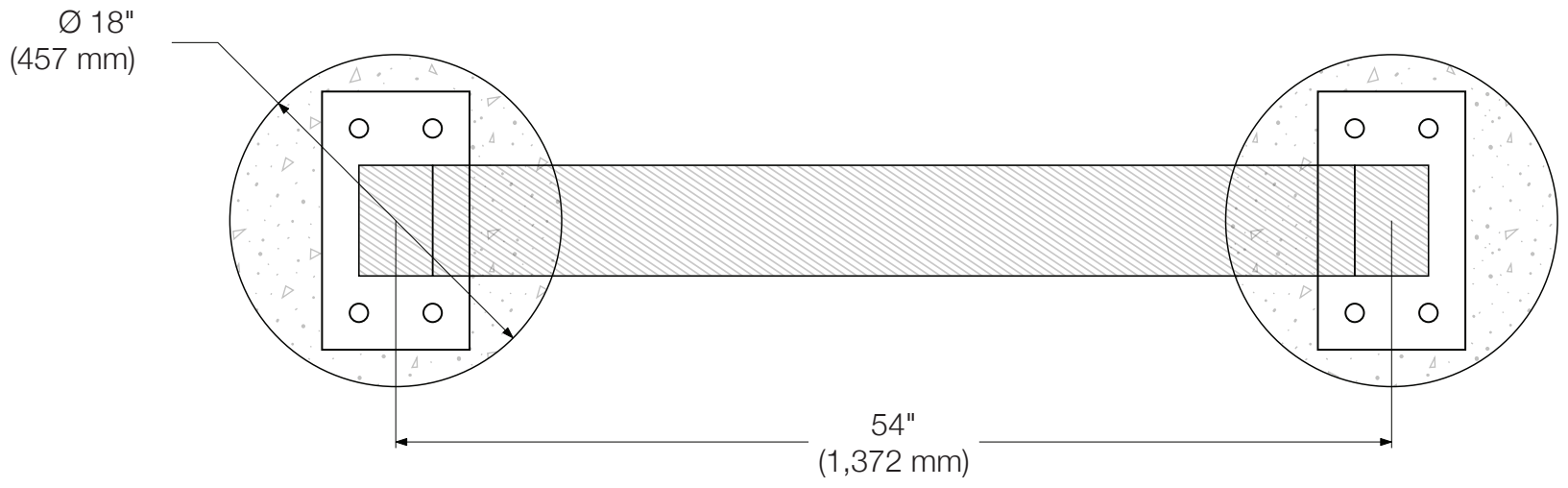
Notes:
- The colours shown here may vary from the finished product due to the transparency of plastics, paints, substrates, viewing on a digital screen or printed proof.
- This artwork is confidential and is the property of Leaman Signs and may not be used in whole or in part without written consent from same.
- Neither seller nor manufacturer shall be liable for any injury, loss or damage direct or consequential arising out of the use of or the inability to use the product. Before using, user shall determine the suitability of the product for its intended use and user assumes all risk and liability whatsoever in connection therewith.

Approval:
Please review, sign, and date this page, indicating your approval. Two rounds of revisions are included in all design and production fees. Revisions beyond the standard two may incur additional charges, at the sole discretion of Leaman Signs. Charges for design and project management will be billed at the current company hourly rate for each service.
Proof approval indicates client's responsibility for all spelling, sizing, colours, and materials indicated within this proof document. Costs associated with any changes after production has commenced will be the sole responsibility of the approving party.

Client Signature: _____

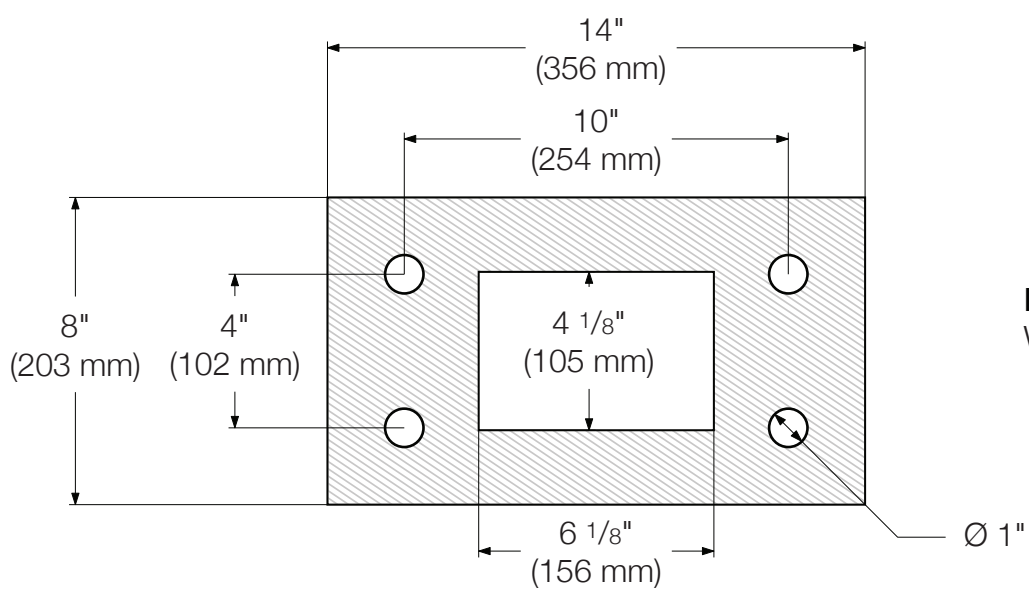
Date: _____

A



CONCRETE BASE: 18" Round sonotubes, 6' deep with 1-25 m Bar in middle. 25Mpa Concrete double wrapped with 6mm poly to aid against adfreeze uplift.

A ILLUMINATED HERITAGE PANEL - TOP
1.2 SCALE 1:10 QTY: 3



BASE PLATES: 8"x14"x1" Steel base plate with anchor bolts and decorative stainless steel cap nuts. White vinyl text applied to face.

A ILLUMINATED HERITAGE PANEL - PLATE
1.3 SCALE 1:5 QTY: 6



77 Blackmarsh Road,
St. John's, NL, A1E 1S6
info@leamansigns.ca - 709-753-7545

Project:
Illuminated
Heritage Panel

February 24 2025

SO#: 6467 Q#: 5351

Location:
115 George Street West
Downtown
St. John's, NL

Bursey Excavating
& Development Inc.

Notes:

- The colours shown here may vary from the finished product due to the transparency of plastics, paints, substrates, viewing on a digital screen or printed proof.
- This artwork is confidential and is the property of Leaman Signs and may not be used in whole or in part without written consent from same.
- Neither seller nor manufacturer shall be liable for any injury, loss or damage direct or consequential arising out of the use of or the inability to use the product. Before using, user shall determine the suitability of the product for its intended use and user assumes all risk and liability whatsoever in connection therewith.

Approval:

Please review, sign, and date this page, indicating your approval. Two rounds of revisions are included in all design and production fees. Revisions beyond the standard two may incur additional charges, at the sole discretion of Leaman Signs. Charges for design and project management will be billed at the current company hourly rate for each service.

Proof approval indicates client's responsibility for all spelling, sizing, colours, and materials indicated within this proof document. Costs associated with any changes after production has commenced will be the sole responsibility of the approving party.

Client Signature: _____

Date: _____

