

DECISION/DIRECTION NOTE

Title: Fencing around Vehicle Storage Yard
DEV1900030
18 International Place

Date Prepared: July 16, 2019

Report To: His Worship the Mayor and Members of Council

Councillor & Role: Councillor Maggie Burton, Planning and Development Lead

Ward: 1

Decision/Direction Required:

To seek approval for type of screening to be placed on existing chain link fence.

Discussion – Background and Current Status:

On January 14, 2019, Council approved a text amendment to allow a Vehicle Storage Yard at the above noted property. As a part of the approval, Council noted “fencing around the vehicle storage yard be opaque so that the yard is not visible from the exterior and that foliage fencing or the masking of the fencing by foliage be incorporated in those areas where the fence would be visible from the adjacent trail”.

Key Considerations/Implications:

1. Budget/Financial Implications: Not applicable.
2. Partners or Other Stakeholders: Not applicable.
3. Alignment with Strategic Directions/Adopted Plans: Not applicable.
4. Legal or Policy Implications: Not applicable.
5. Privacy Implications: Not applicable
6. Engagement and Communications Considerations: Not applicable.
7. Human Resource Implications: Not applicable.
8. Procurement Implications: Not applicable.
9. Information Technology Implications: Not applicable.
10. Other Implications: Not applicable.

The logo for St. John's, featuring the words "ST. JOHN'S" in a serif font. The letter "O" in "JOHN'S" is replaced by a stylized circular emblem containing three curved lines, resembling a signal or a stylized 'S'.

Recommendation:

It is recommended that Council approve one of the suggested privacy options.

Prepared by - Date/Signature:

Ashley Murray- Development Officer II

Signature: 

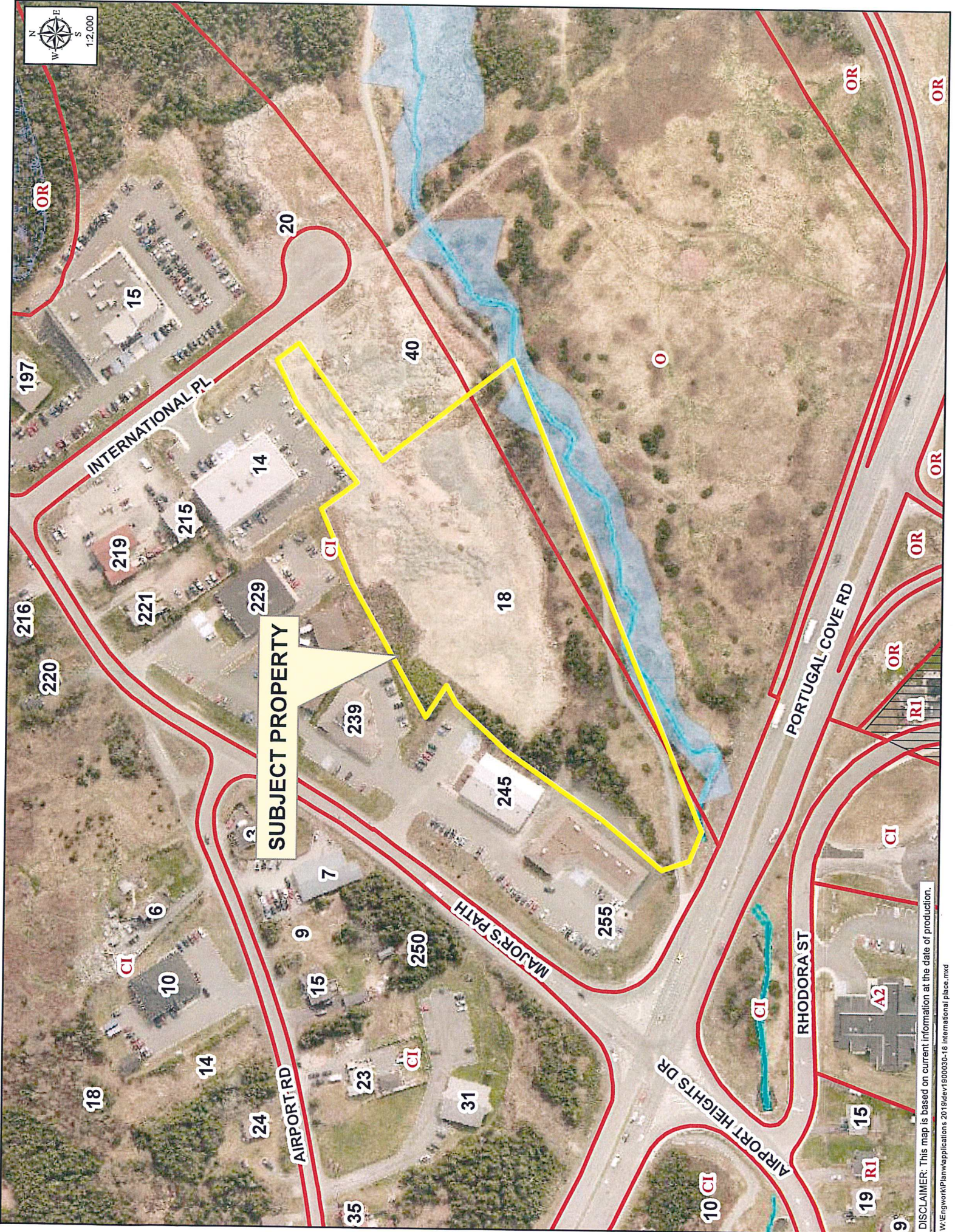
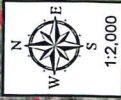
Approved by - Date/Signature:

for Jason Sinyard, P. Eng., MBA, Deputy City Manager,
Planning, Engineering & Regulatory Services

Signature: 

AAM/dlm

Attachments: Location Map
 Fence Literature



DISCLAIMER: This map is based on current information at the date of production.
W:\Engwork\Plan\w\applications 2019\dev1900030-18 International place.mxd

FENCE PRODUCTS SPECIFICATIONS

WINGED SLAT SIZE SPECS

SLAT TYPE	SLAT WIDTH	MESH SIZE	WIRE GAUGE	SLATS PER BAG	APPROX. COVERAGE PER BAG
WINGED SLAT	1 1/4"	2"	9" ONLY	82	10 LINEAR FEET

MATERIALS

The Winged Slat is extruded from High Density Polyethylene (HDPE), color pigments and ultra violet (UV) inhibitors, specifically designed to retard the harmful effects of the sun and lengthen the life of the product.

- Winged Slats include Ethyl Vinyl Acetate (EVA), a softer plastic to keep the wings flexible and resilient.

DURABILITY

PDS® HDPE Fence Products are resistant to: severe weather conditions, salt water, sand, road dirt, most acids, alcohol, alkaline, ammonia, petroleum distillates, and common environmental pollutants.

MAINTENANCE

Pressure cleaning of surface contaminants is quickly accomplished with plain water.

WINDLOAD DISCLAIMER

Bunzl will not be responsible for fence damage resulting from wind load conditions due to insufficient structural support.

LIMITED WARRANTY

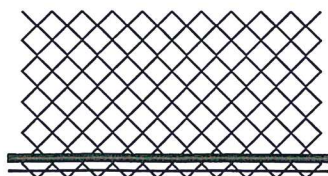
Winged Slat carries a 25-year, pro-rata warranty against breakage under normal conditions. Write Bunzl Extrusion for full warranty information.

HDPE TECHNICAL PROPERTIES

Property	Value
Melt Index	(.6) A low melt index indicates improved stress and crack resistance.
Density	(.957) Polyethylene ranges anywhere from .914 to .960 in density. A higher density yields maximum stiffness without becoming overly brittle.
Minimum Temp.	(-76° F) Polyethylene stays flexible even at this temperature extreme.
Maximum Temp.	(250° F) Polyethylene does not distort until reaching this temperature.
Tensile Strength	(3,700 psi) Material will not suffer distortion at lesser loads or impacts.

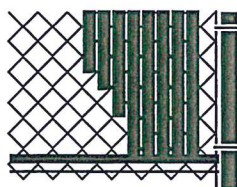
INSTALLATION INSTRUCTIONS

Step 1



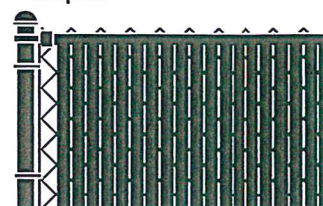
Insert rail horizontally in first full diamond at bottom of fence with open side facing up.

Step 2



Insert vertical slats with interlocking tab downward. Slat engages and interlocks with bottom rail.

Complete



Enjoy a beautiful fence that was simple to install.

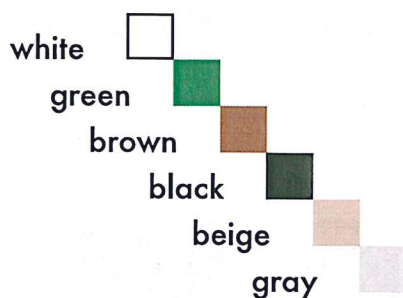
Contact your local fence professional for more information about our complete line of enhancement products.



WINGED MAXIMUM SLAT®

When you need increased privacy, our Winged Slat® is the answer. With the proven quality and durability of our standard slats plus unique "wings" for extra screening and security. Maximum also uses our patented bottom-locking system for fast and easy installation.

- ✦ **UNIQUE PATENTED DESIGN:** Includes a rigid, flat-tubular body. Flexible and resilient wing portions are positioned on each side of the slat body.
- ✦ **STANDARD HEIGHTS:** 4, 5, 6 feet. For heights exceeding 7 feet, we recommend using (2) two half sizes (i.e. for 10 ft. fence use two 5 ft. slats) this will help during installation and will not lessen privacy.
- ✦ **WIND LOAD AND PRIVACY FACTOR:** Approximately 90%. (Based on wire/mesh used—stretch tension)
- ✦ **SLAT LENGTH:** 2" shorter than overall height of fence.
- ✦ **NOTE:** Additional time should be allowed for installation.



SPECIAL ORDER COLORS



* Exact representation of slat colors in printing is difficult. Please refer to actual color samples for final matching.



PHOENIX FENCE

EDMONTON

12816-156 STREET T5V 1E9
PHONE: (780) 447-1919
FAX: (780) 447-2512
TOLL FREE: 1-800-661-9847
E-MAIL: phoenix@phoenixfence.ca

CALGARY

6204-2nd STREET S.E. T2H 1J4
PHONE: (403) 259-5155
FAX: (403) 259-2262
TOLL FREE: 1-888-220-2525
E-MAIL: calgary@phoenixfence.ca

WEBSITE: www.phoenixfence.ca

Covered by one or more of the following patents:
US Patent 5,184,801 / 5,687,957

Manufactured by



HedgeLink™



HedgeLink™ is one of the most unique styles of chain link enhancement available from Pexco.

This product creates a natural hedge look on chain link fence, and requires no maintenance.

Design

Core is made with 16-gauge, braided galvanized wire. The needles are made with 3-mil PVC.

Standard Heights

4, 5, 6, 7, 8 and 10 feet.

Fence Size

For most fence sizes. Not intended for use with mini-mesh wire.

Wind Load and Privacy Factor

Approximately 90%.

Features

- UV stabilized to protect against the harmful rays of the sun.
- Flame retardant.
- 10-year, pro-rated warranty.
- Elite Spruce colored PVC needles.



FENCE PRODUCTS

PDS® is a registered trademark of Pexco



HedgeLink™ Product Specifications



Slat Type	Slat Width	Mesh Size	Wire Gauge	Slats Per Box	Approx. Coverage Per Box
HedgeLink	—	2", 2 1/4" or 2 3/8"	9, 11 or 11 1/2"	82	10 linear feet

Materials

The HedgeLink product is made with 16-gauge, galvanized, braided wire and needles are made with 3-mil (PVC).

Durability

Pexco PDS® PVC Fence Products are resistant to: severe weather conditions, salt water, sand, road dirt, most acids, alcohol, alkaline, ammonia, petroleum distillates and common environmental pollutants.

Maintenance

Pressure cleaning of surface contaminants is quickly accomplished with plain water.

Wind Load Disclaimer

Pexco will not be responsible for fence damage resulting from wind load conditions due to insufficient structural support.

Limited Warranty

HedgeLink carries a 10-year, pro-rata warranty. Write Pexco for full warranty information.

Note

Do not mix HedgeLink with any other manufacturer's inferior hedge product — color shades are different, and the durability of HedgeLink will outlast others.

Installation Instructions

Requires no locking device or tools.

HedgeLink installs much like our classic Bottom-Locking or Top-Locking slats — installing vertically from top to bottom.



Insert HedgeLink slats vertically top to bottom, with angle cut end downward, while revolving the slat clockwise with your fingers for easier installation.



FENCE PRODUCTS

Pexco Tacoma
Tacoma, WA
800.822.7528

Pexco Athol
Athol, MA
800.755.7528

www.pdsfence.com
www.pexco.com

Contact your local fence professional for more information about our complete line of enhancement products.

