



St. John's
Transportation
Commission

QUARTER 1

2022

FINANCIAL RESULTS
CITY COUNCIL REPORT

Issued: MAY 09, 2022

Note to reader: The figures contained herein are unaudited and for discussion purposes and may change as a result of timing issues and other best estimates used in preparation.

Overview of Q1: January – March, 2022



Highlights:

1. On January 3rd, Metrobus moved to a reduced schedule due to rising number of cases and the Province moving to modified Level 4 at 12:01 am on January 4th. Maintenance and supervisory staff moved to adjusted work schedules to create two separate shifts or “bubbles” and staff moved to rotating shifts and working from home where possible. The service reduction and shift adjustments enhanced our ability to maintain service levels in the event of increased Covid related employee absences.

On January 25th, Eastern Health increased the passenger limit from 19 passengers to a full seated load (it was reduced to 19 in December) in advance of Memorial University students returning to class on January 31st for all classes with fewer than 100 students. On January 31st, Metrobus returned to regular service and work schedules and introduced the new ZIP network.

2. Staff continued to work with Via Mobility, the software provider for the GoBus On Demand scheduling system, to address outstanding issues impacting customers. Progress has been made with the issues deemed as priority resolved. A few minor issues remain and are currently being addressed.
3. The radio system for both Metrobus and Public Works uses two towers: Kenmount Hill and CBC tower on Shea Heights. The City was notified in 2021 by CBC that they will be decommissioning the tower in Shea Heights in July of this year. A replacement tower in Shea Heights owned by NTV has been secured. The radio system will be moved to the NTV tower in June.
4. At the end of March, the price of diesel climbed to \$1.9408. The 2022 budget was based on \$1.19 resulting in an estimated deficit of \$1.1 million in 2022. This concern was raised to the Commission and Council who approved the overage in an effort not to increase fares or reduce service at this time. It will continue to be monitored and will be revisited to determine if changes are necessary.
5. In March, the City's internal auditors began an audit on the GoBus service. This will be the first internal audit since Metrobus had an internal audit on cash handling completed in 2019.
6. On March 18th, Transit Operator and Worker Appreciation Day was celebrated across Canada, Recognition of this day was shared through social media.
7. Metrobus is working with Edmundo Fausto on an electrification plan. Funding from infrastructure Canada has been approved for development of the plan for 80% of the cost up to \$250,000. Plans are also in place to install four chargers for electric vehicles on site.



ST. JOHN'S TRANSPORTATION COMMISSION

QUARTERLY RESULTS SUMMARY 2022

For the First Quarter Ended March 31, 2022



	JAN	FEB	MAR	1st QUARTER TOTAL	1st QUARTER BUDGET	VARIANCE	%
METROBUS OPERATIONS							
SJMC subsidy	1,114,550	1,077,070	1,374,010	3,565,630	3,565,630	0	0.0%
Passenger revenue	259,525	278,192	332,213	869,930	974,400	-104,470	-10.7%
Low Income pass revenue	163,205	163,240	163,205	489,650	535,500	-45,850	-8.6%
Mount Pearl revenue	86,159	81,761	93,442	261,362	247,690	13,672	5.5%
Paradise revenue	22,556	21,431	24,159	68,146	68,520	-374	-0.5%
Transit advertising revenue	9,230	6,245	12,364	27,839	36,750	-8,911	-24.2%
Community Bus revenue	978	1,473	1,751	4,202	0	4,202	#DIV/0!
Other	11,382	17,049	14,027	42,458	30,000	12,458	41.5%
Total Revenues	1,667,585	1,646,461	2,015,171	5,329,217	5,458,490	-129,273	-2.4%
Operators salaries	398,332	432,271	554,945	1,385,548	1,434,620	49,072	3.4%
Operations salaries	98,343	97,531	126,680	322,554	329,320	6,766	2.1%
Diesel fuel expense	191,056	220,469	293,044	704,569	575,490	-129,079	-22.4%
Advertising expense	4,957	4,587	4,090	13,634	16,240	2,606	16.0%
Transit advertising expense	6,200	6,467	7,952	20,619	25,370	4,751	18.7%
Community Bus expense	10,237	10,119	9,892	30,248	0	-30,248	#DIV/0!
Other	19,020	22,396	31,364	72,780	79,660	6,880	8.6%
Total Operations	728,145	793,840	1,027,967	2,549,952	2,460,700	-89,252	-3.6%
Garage salaries	167,106	169,878	232,616	569,600	584,970	15,370	2.6%
Wash salaries	27,043	26,415	36,938	90,396	103,200	12,804	12.4%
Stock parts, tires & lubricants	97,032	67,216	127,007	291,255	261,710	-29,545	-11.3%
Building & yards	30,953	116,238	46,564	193,755	41,450	-152,305	-367.4%
Utilities	40,130	32,801	54,439	127,370	159,300	31,930	20.0%
Other	20,482	27,193	26,932	74,607	71,240	-3,367	-4.7%
Total Maintenance	382,746	439,741	524,496	1,346,983	1,221,870	-125,113	-10.2%
Administration salaries	67,322	67,023	83,912	218,257	224,730	6,473	2.9%
Payroll tax	15,467	16,589	20,592	52,648	53,870	1,222	2.3%
Benefits	143,703	146,556	162,022	452,281	476,940	24,659	5.2%
Pension expense	120,793	119,264	142,702	382,759	465,570	82,811	17.8%
Fleet insurance	39,663	39,663	39,663	118,989	118,500	-489	-0.4%
Other	69,000	47,346	40,214	156,560	137,010	-19,550	-14.3%
Total Finance & Admin	455,948	436,441	489,105	1,381,494	1,476,620	95,126	6.4%
Loan interest expense	3,679	3,419	4,185	11,283	12,300	1,017	8.3%
Bank loan payments	50,000	50,000	50,000	150,000	287,000	137,000	47.7%
Total Debt	53,679	53,419	54,185	161,283	299,300	138,017	46.1%
METROBUS Surplus/(Cost)	47,067	-76,980	-80,582	-110,495	0	-110,495	
Ridership	149,721	208,544	263,211	621,476	724,684	-103,208	-14.2%
Kilometers	234,527	249,781	281,859	766,167	791,883	-25,716	-3.2%
Hours	10,537	11,438	12,854	34,829	35,480	-651	-1.8%
Diesel litres	140,212	151,850	172,095	464,157	481,580	-17,423	-3.6%

ST. JOHN'S TRANSPORTATION COMMISSION

QUARTERLY RESULTS SUMMARY 2022

For the First Quarter Ended March 31, 2022



	JAN	FEB	MAR	1st QUARTER TOTAL	1st QUARTER BUDGET	VARIANCE	%
GOBUS OPERATIONS							
SJMC subsidy	400,620	402,570	439,590	1,242,780	1,242,780	0	0.0%
Pass sales	8,580	10,434	10,957	29,971	65,700	-35,729	-54.4%
Low Income pass revenue	11,795	11,760	11,795	35,350	0	35,350	
Mount Pearl admin fee	5,940	8,330	7,790	22,060	23,170	-1,110	-4.8%
Government grant	7,875	7,875	7,875	23,625	23,700	-75	-0.3%
Total Revenue GOBUS	434,810	440,969	478,007	1,353,786	1,355,350	-1,564	-0.1%
MVT subsidy	160,167	214,804	298,007	672,978	1,177,070	504,092	42.8%
Administration salaries	10,699	10,998	14,284	35,981	35,030	-951	-2.7%
Payroll tax	215	221	286	722	650	-72	-11.1%
Benefits	1,318	1,346	1,312	3,976	3,269	-707	-21.6%
Pension expense	749	749	774	2,272	3,291	1,019	31.0%
Professional fees	975	1,064	4,609	6,648	22,620	15,972	70.6%
Computer expense	11,755	28,884	13,003	53,642	52,490	-1,152	-2.2%
Other	3,885	4,776	6,020	14,681	12,630	-2,051	-16.2%
	189,763	262,842	338,295	790,900	1,307,050	516,150	39.5%
Loan interest expense	122	96	96	314	300	-14	-4.7%
Bank loan payments	16,000	16,000	16,000	48,000	48,000	0	0.0%
Total Debt	16,122	16,096	16,096	48,314	48,300	-14	0.0%
GOBUS Surplus/(Cost)	228,925	162,031	123,616	514,572	0	514,572	
Paid Ridership to MVT	4,717	6,382	8,884	19,983	34,880	-14,897	-42.7%
TOTAL ORGANIZATION	275,992	85,051	43,034	404,077	0	404,077	

ST. JOHN'S TRANSPORTATION COMMISSION
KEY PERFORMANCE INDICATORS
MARCH, 2022



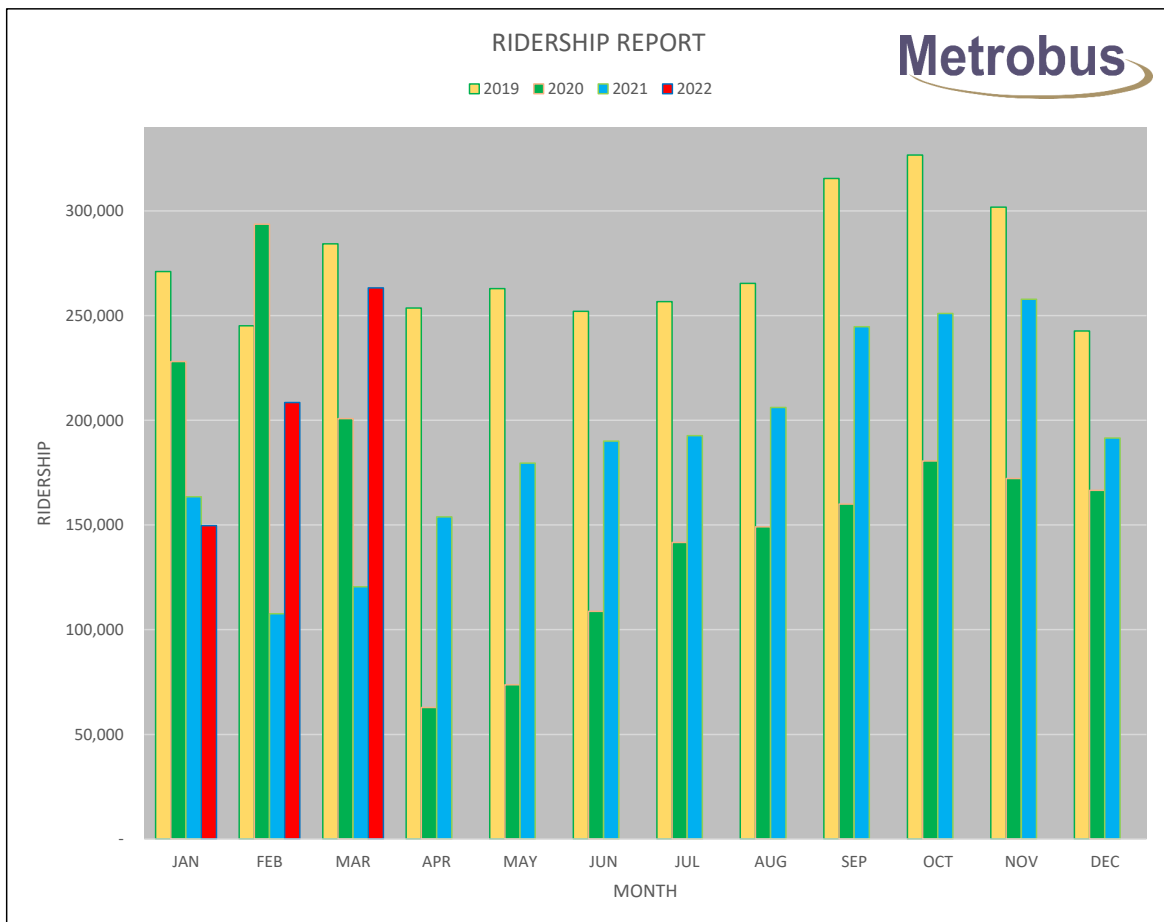
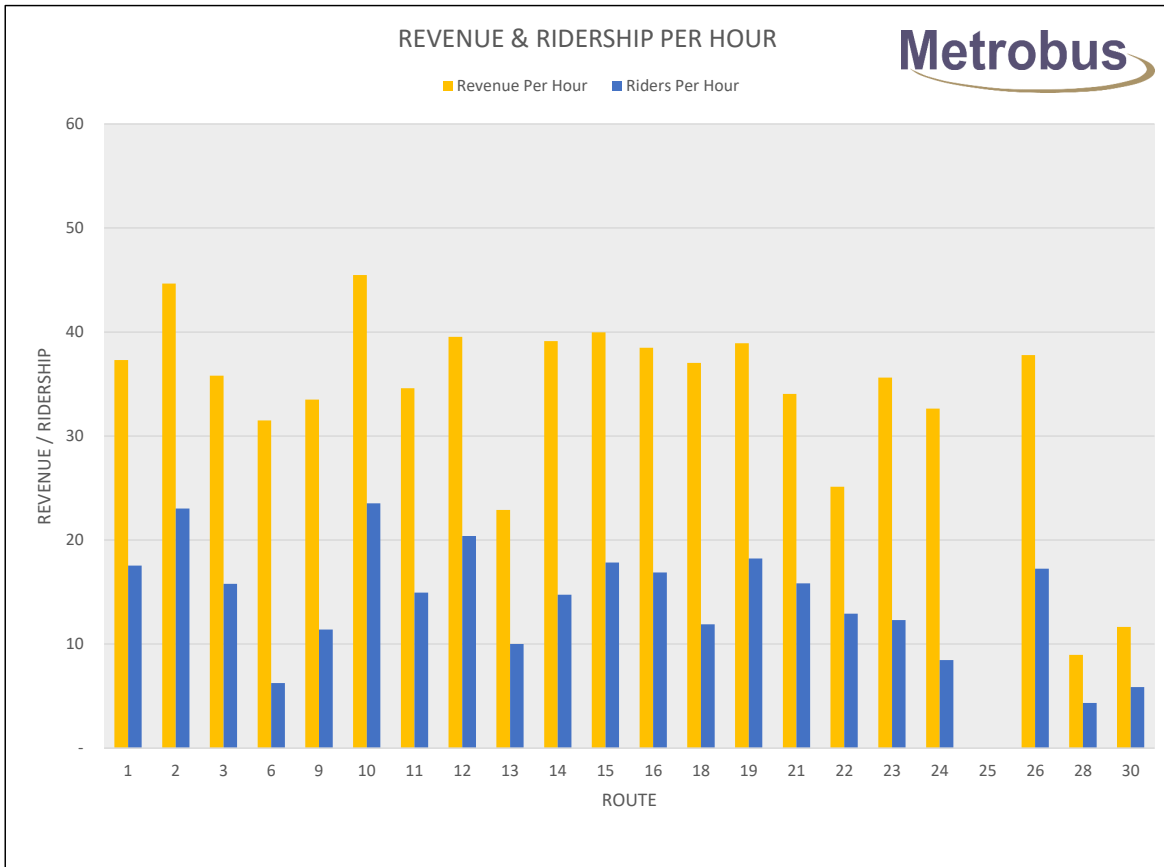
	1ST QTR	1ST QTR	1ST QTR	TOTAL	TOTAL	TOTAL	TOTAL
KEY PERFORMANCE INDICATORS	2022	2021	2020	2020	2019	2018	2017
PASSENGERS PER HOUR	17.84	12.15	23.03	15.51	24.21	22.08	21.47
ENERGY EFFIC. (Diesel / Rev Hours)	20.23	13.28	13.83	11.14	14.36	14.49	12.12
FINANCIAL PERFORMANCE (Op Rev / Op Cost)	26.6%	23.4%	27.6%	22.8%	32.7%	31.2%	33%
MAINTENANCE EFFIC. (Bus Maint / Rev Hours)	27.92	28.13	28.79	30.43	26.68	25.59	25.06
AVERAGE FARE (Low Income Pass incl.)	2.19	2.62	1.75	2.20	1.87	1.92	1.95
OPERATING REVENUE / HOUR	39.84	32.66	41.57	34.86	46.40	43.80	43.47
TOTAL COST PER RIDER	8.75	12.02	6.99	10.59	6.44	6.97	6.99

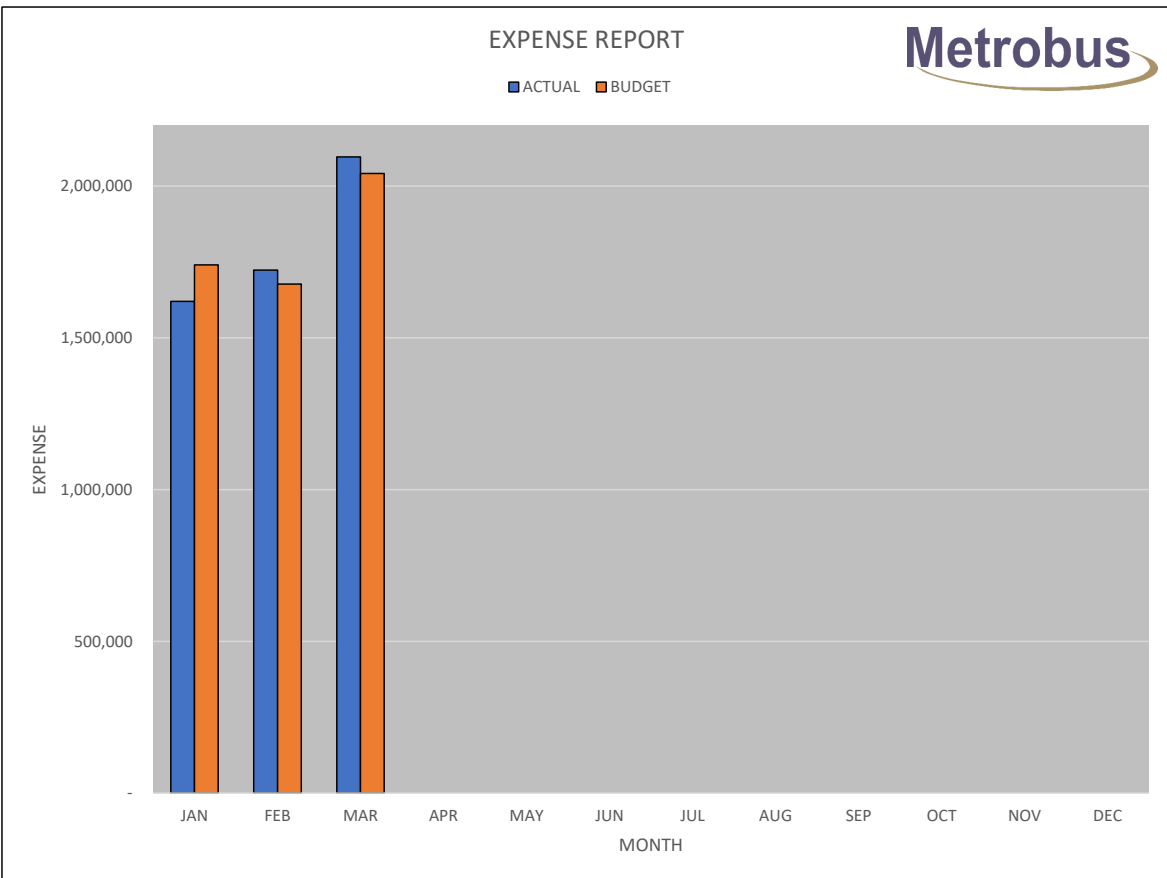
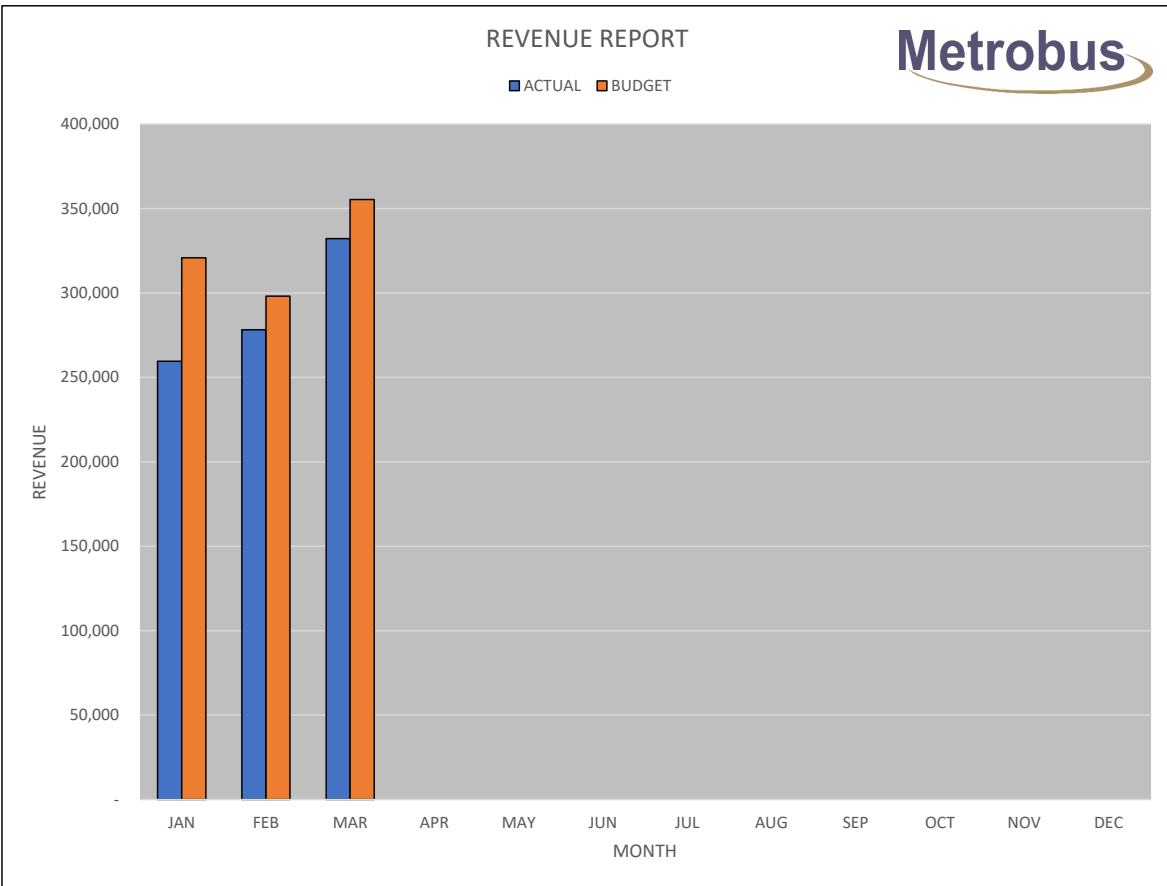
4

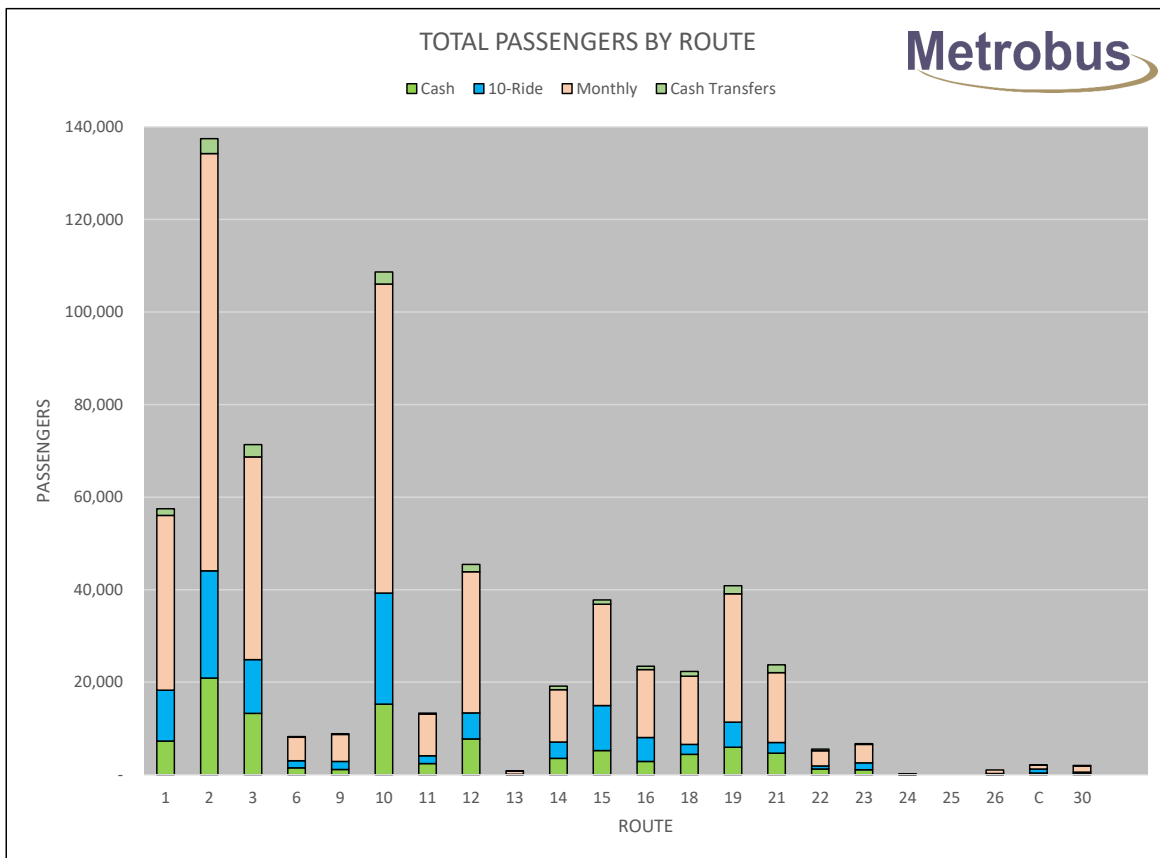
ST. JOHN'S TRANSPORTATION COMMISSION
KEY PERFORMANCE INDICATORS
MARCH, 2022



	1ST QTR	% of	1ST QTR	% of	1ST QTR	% of	TOTAL	% of	TOTAL	% of	TOTAL	TOTAL	% of
KEY PERFORMANCE INDICATORS	2022	Paid Trips	2021	Paid Trips	2020	Paid Trips	2020	Paid Trips	2019	Paid Trips	2018	2017	Paid Trips
BUS TRIPS	13,868	66.2%	11,881	68.4%	17,963	60.7%	52,523	61.6%	98,012	60.5%	89,970	72,581	56.1%
TAXI TRIPS	6,115	29.2%	4,775	27.5%	10,127	34.2%	29,196	34.3%	58,085	35.8%	51,870	49,297	38.1%
TOTAL TRIPS	19,983		16,656		28,090		81,719		156,097		141,840	121,878	
NO SHOWS	950	4.5%	707	4.1%	1,522	5.1%	3,516	4.1%	5,985	3.7%	6,832	7,474	5.8%
TOTAL PAID TRIPS	20,933		17,363		29,612		85,235		162,082		148,672	129,352	
CANCELLATIONS	8,833	42.2%	12,439	71.6%	25,722	86.9%	71,522	83.9%	70,239	43.3%	57,627	24,825	19.2%
GOBUS rides on METROBUS	5,100	24.4%	2,976	17.1%	3,230	10.9%	12,618	14.8%	23,976	14.8%	19,346	14,264	11.0%







ROUTE	REVENUE HOURS	DIRECT BILLING	RC RATIO		
			REVENUE	COST	YTD
1	3,196.4	\$0	\$119,253	\$499,271	23.9%
2	5,829.1	\$0	\$260,245	\$908,931	28.6%
3	4,348.6	\$0	\$155,639	\$677,799	23.0%
6	1,296.0	\$0	\$40,829	\$201,701	20.2%
9	762.9	\$0	\$25,560	\$118,813	21.5%
10	4,507.5	\$0	\$204,949	\$703,030	29.2%
11	876.9	\$0	\$30,334	\$136,530	22.2%
12	2,152.7	\$0	\$85,084	\$335,103	25.4%
13	77.0	\$0	\$1,763	\$12,149	14.5%
14	1,248.0	\$0	\$48,822	\$194,260	25.1%
15	2,066.7	\$0	\$82,600	\$322,289	25.6%
16	1,346.8	\$0	\$51,834	\$209,626	24.7%
18	1,786.8	\$0	\$66,171	\$278,110	23.8%
19	2,143.8	\$0	\$83,413	\$334,224	25.0%
21	1,394.0	\$189,982	\$47,452	\$216,988	21.9%
22	400.0	\$71,380	\$10,047	\$62,297	16.1%
23	532.0	\$0	\$18,952	\$82,752	22.9%
24	11.0	\$0	\$359	\$1,736	20.7%
26	58.5	\$0	\$2,211	\$9,233	23.9%
28	468.8	\$0	\$4,203	\$30,248	13.9%
30	325.1	\$68,146	\$3,787	\$50,619	7.5%
34,828.7		\$329,507	\$1,343,508	\$5,385,707	24.9%

Cost / revenue hour (includes regular debt payments & special pension):

\$154.63

