



City Of
St. John's
City Hall

10

NEW GOWER ST

ADELAIDE ST

ADELAIDE ST

GEORGE ST

WATER ST

WATER ST

BISHOP'S COVE

NEW GOWER ST

WATER ST

City Of
St. John's
Annex



11-17

9

3

16

14

13

15

320

324

330

23

10

8

332

336

319

315

310

308

306

304

305

309

331

9

1

338

4

2

340

335

337

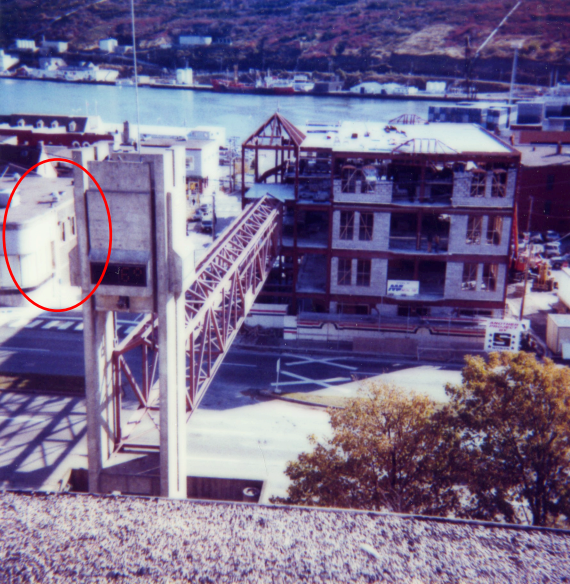
39

49

32

51







E. HALLEY & CO.

THE WASHINGTON BUS

THE WASHINGTON BUS
SURE - OF IT
W



ARCHITECT: Parkin Architects, Engineers and Planners

CONTRACTOR: Seaboard Construction Limited

SUBJECT: City Hall, St. John's, Nfld.

DATE: March 9, 1970



L2- 5 JOB STREET
ST. JOHN'S
NEWFOUNDLAND & LABRADOR
(709) 364-2637
HELLO@CARVELANDHELM.CA

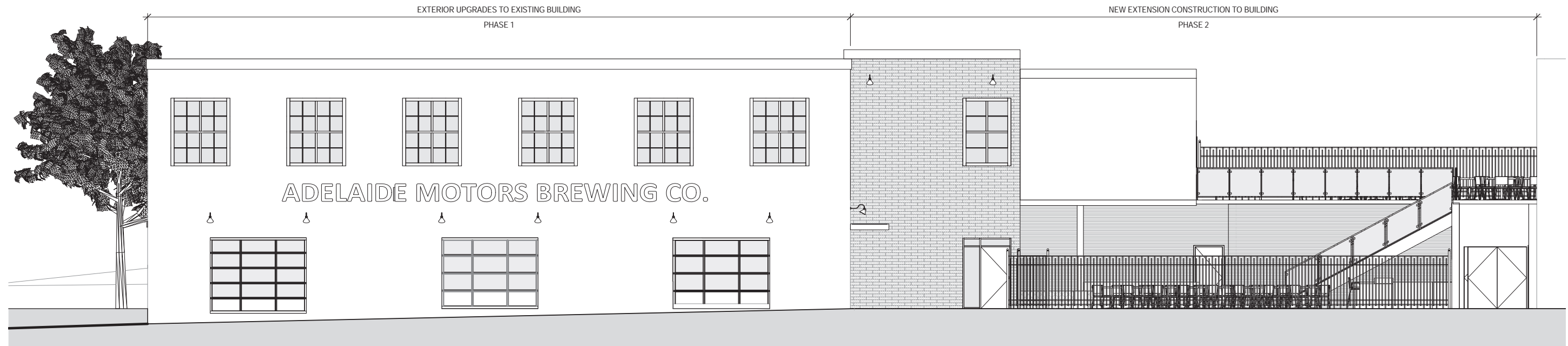
AUGUST 18, 2021

PROJECT NO.: 2143/44

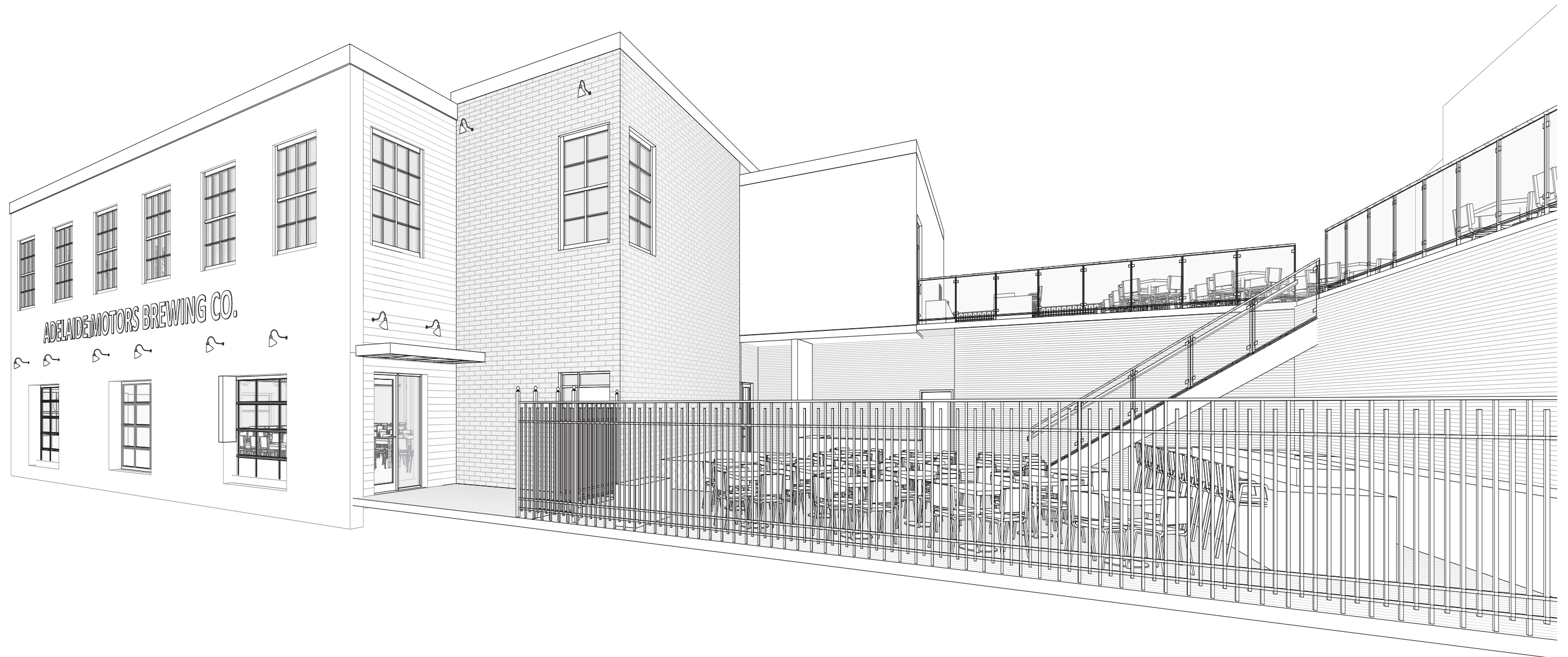
Adelaide Motors Brewing Co.
Schematic Design Presentation

CARVEL
& HELM

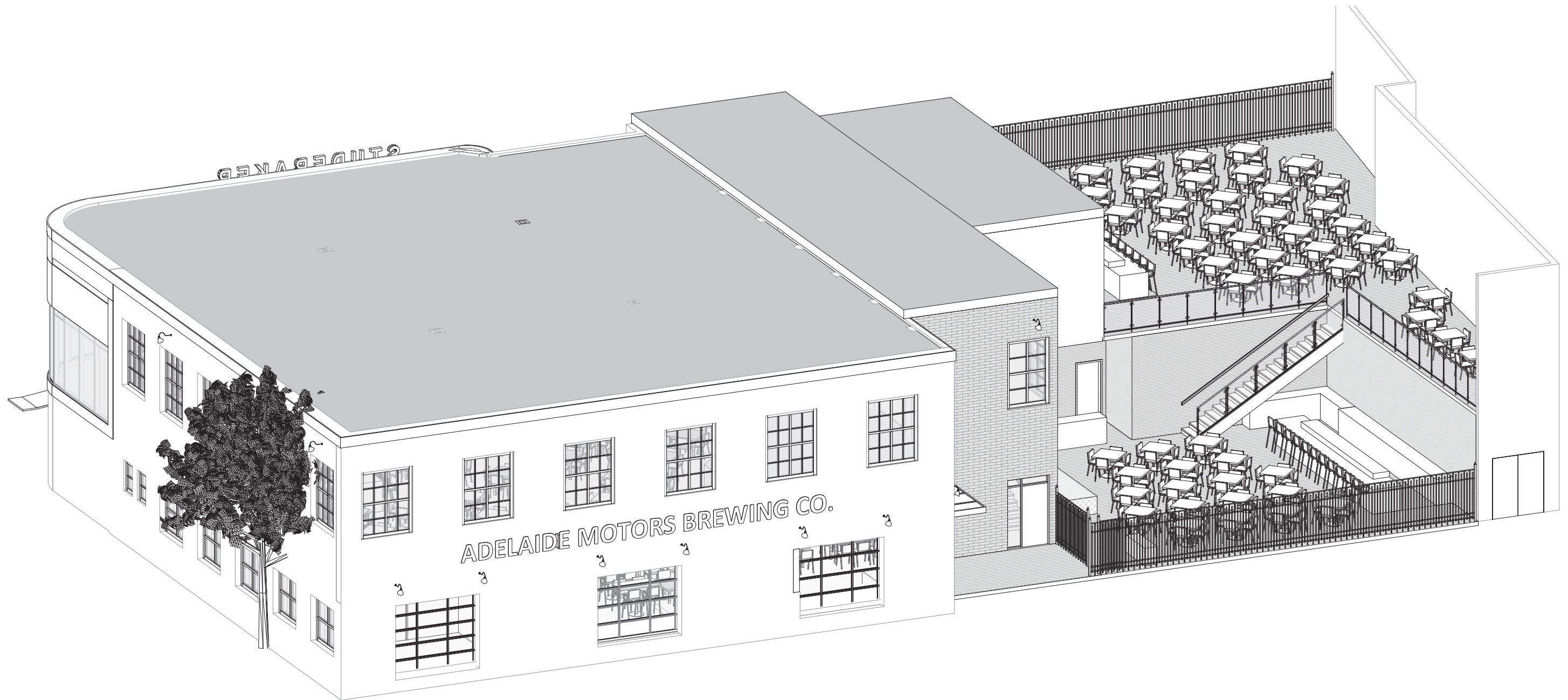
1.0 Schematic Exterior Elevation - Existing Building Upgrades with future Extension



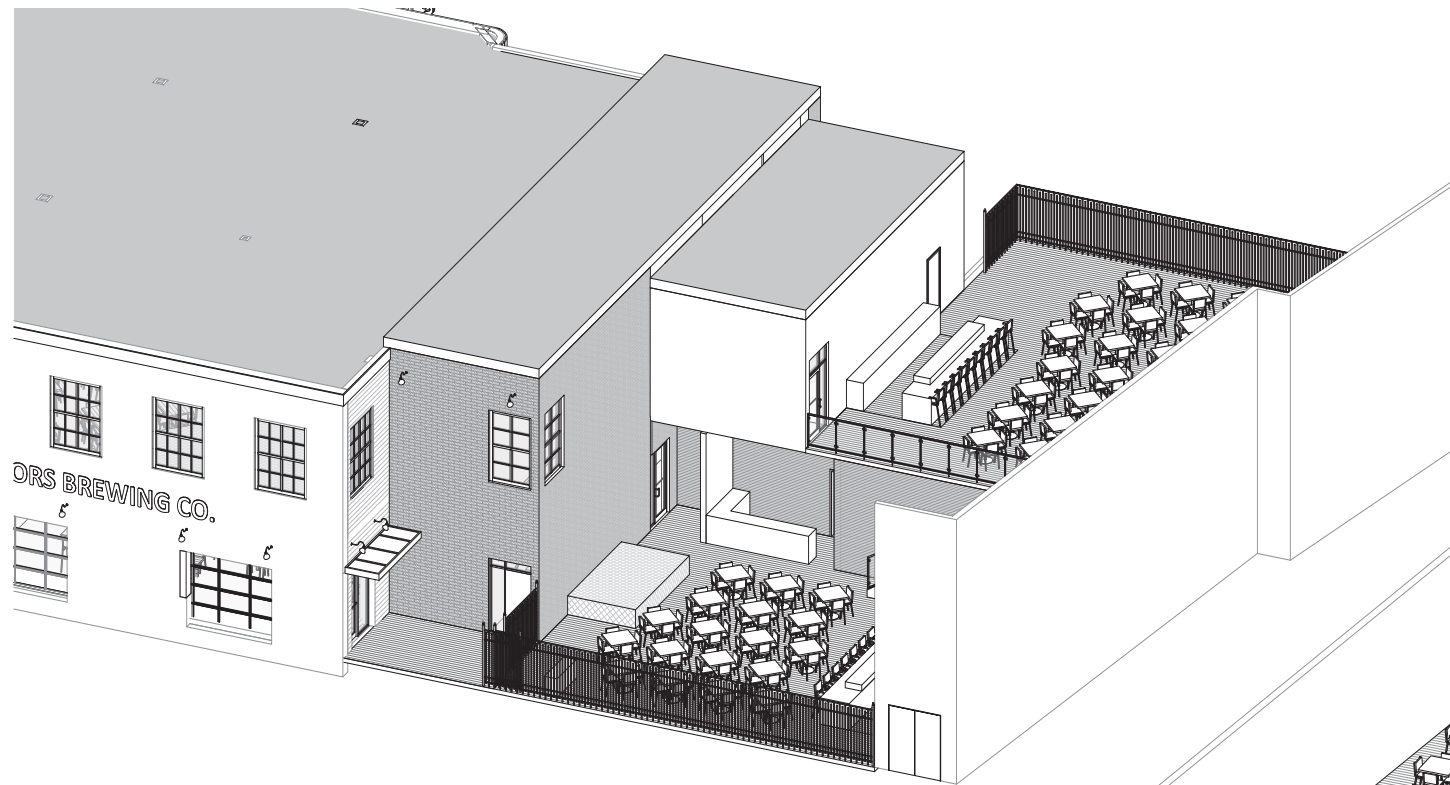
1.1 Schematic Exterior View - George Street



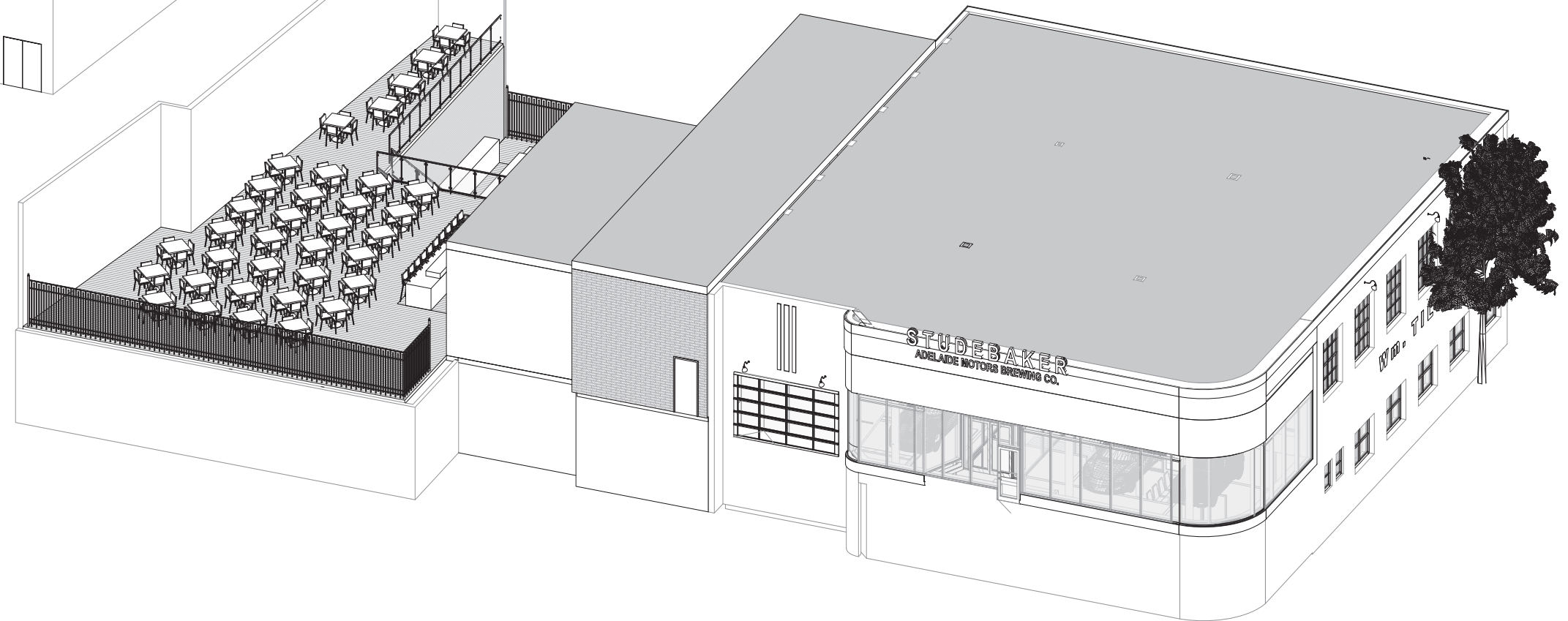
1.2 Schematic Exterior View - Building Extension & George Street Courtyard



1.3 Schematic Exterior Views



Building Expansion - George Street



Building Expansion - New Gower Street

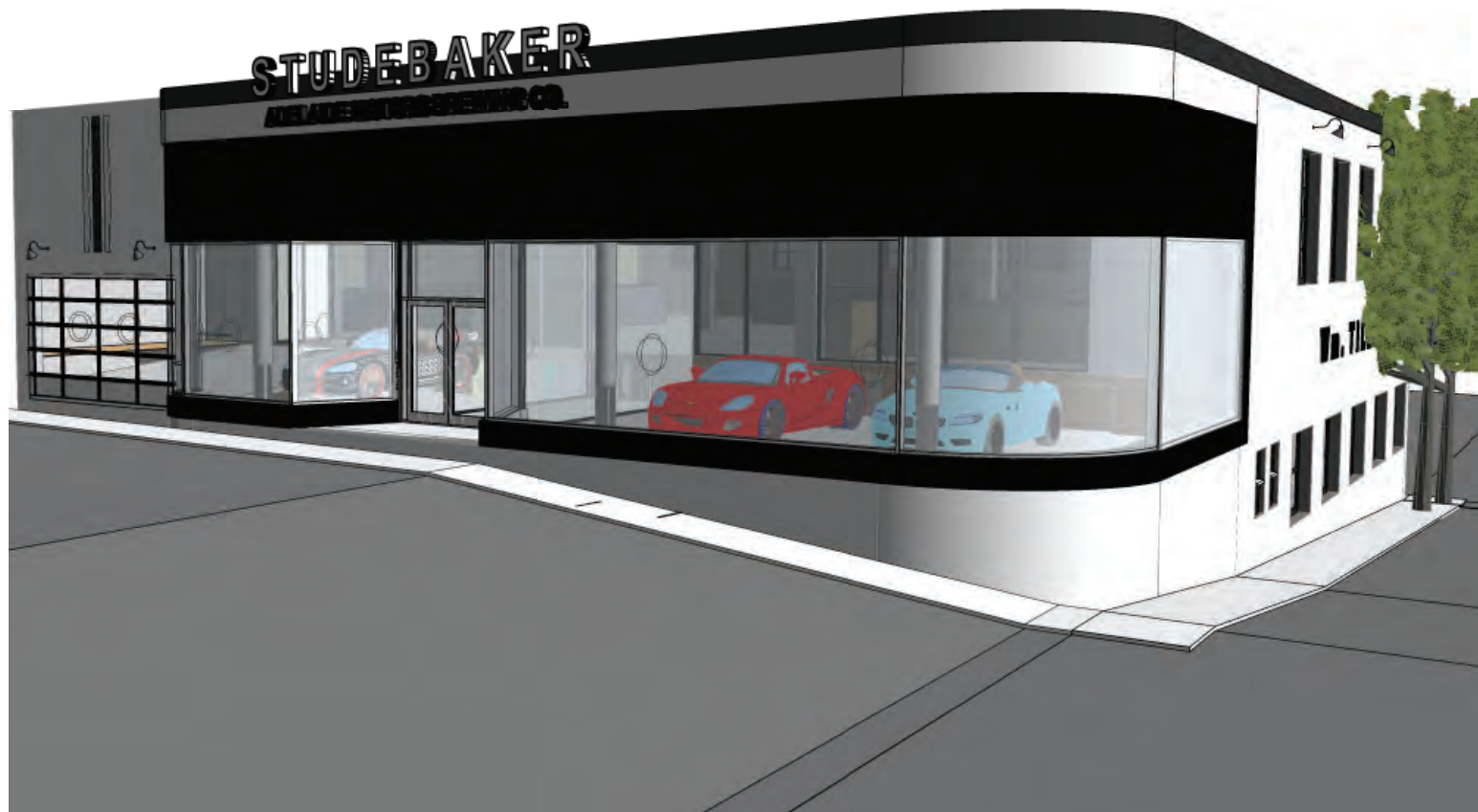
1.4 Schematic Exterior View from Adelaide



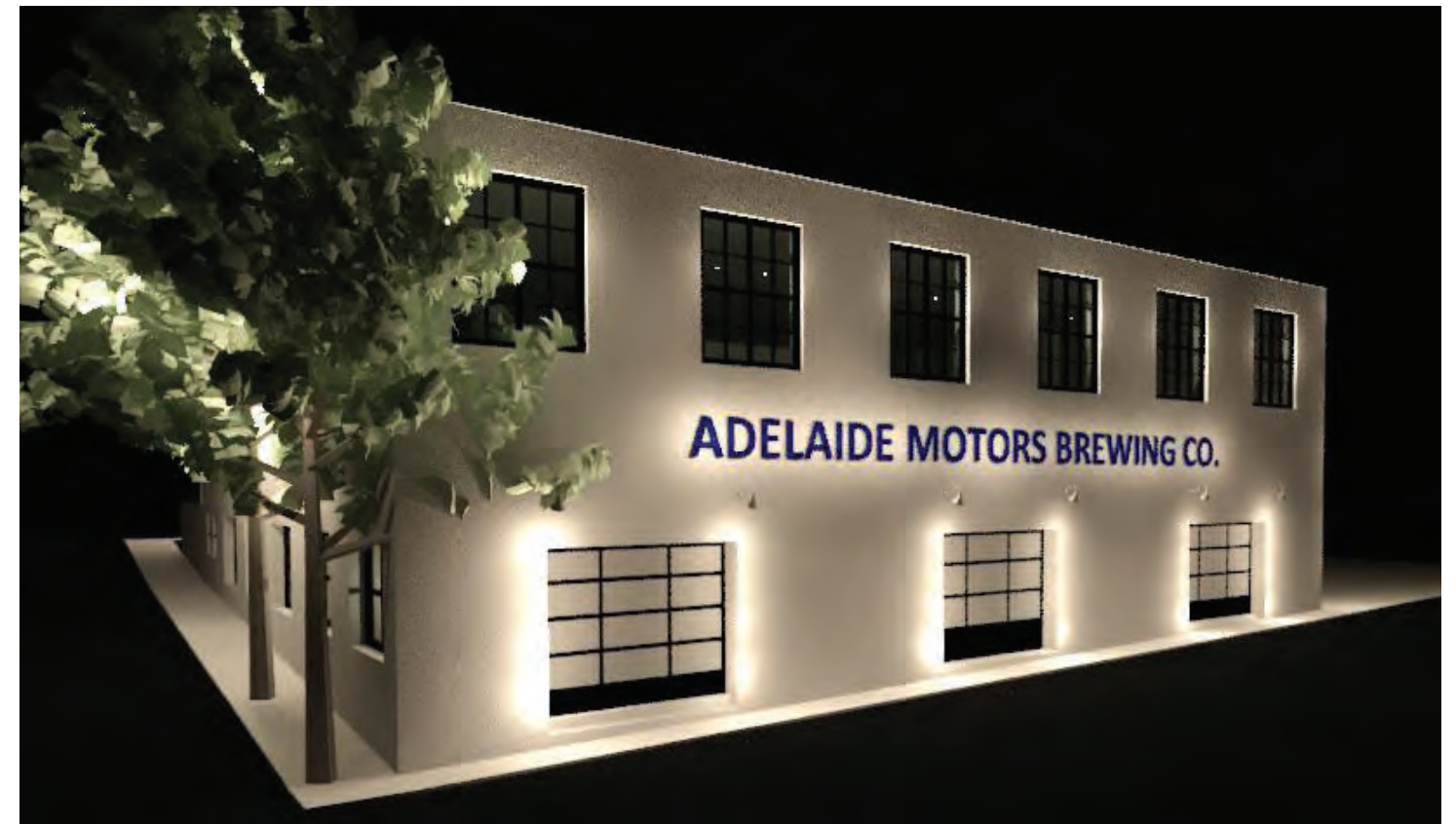
1.5 Schematic Exterior View New Gower

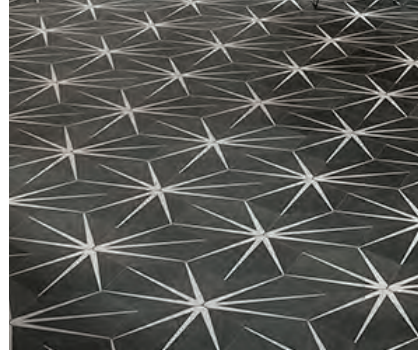
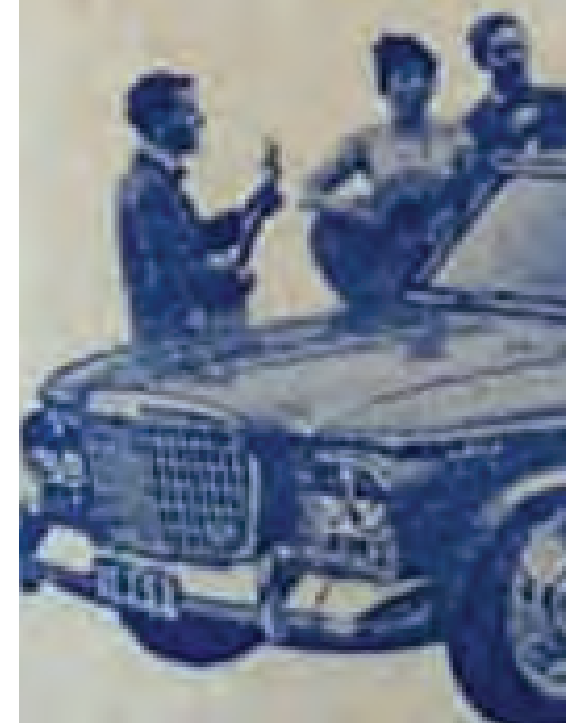


1.6 Schematic Exterior Elevation & Views - New Gower

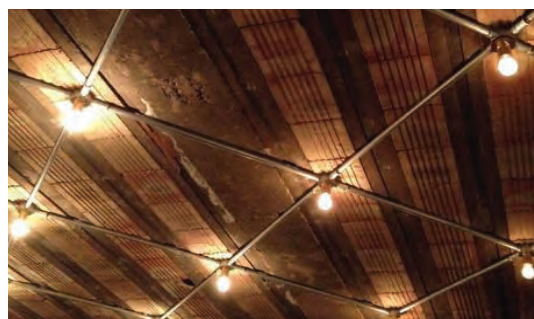


1.7 Schematic Exterior Elevation & Views - George Street

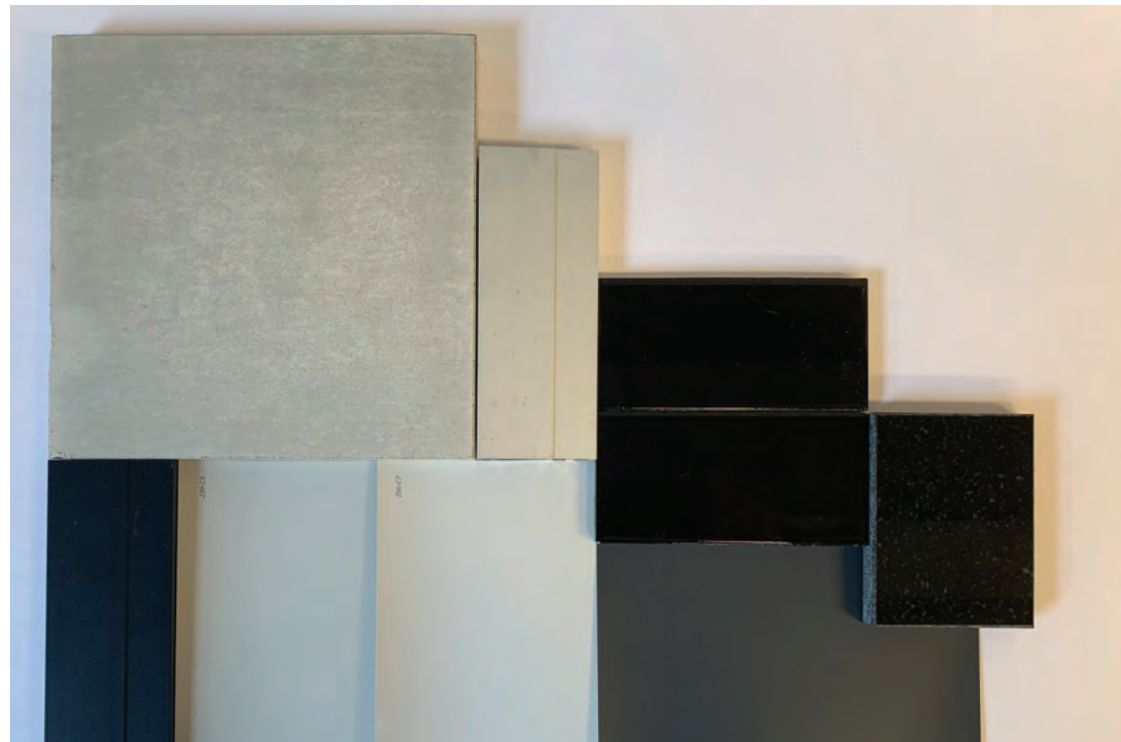




SQR 20031201



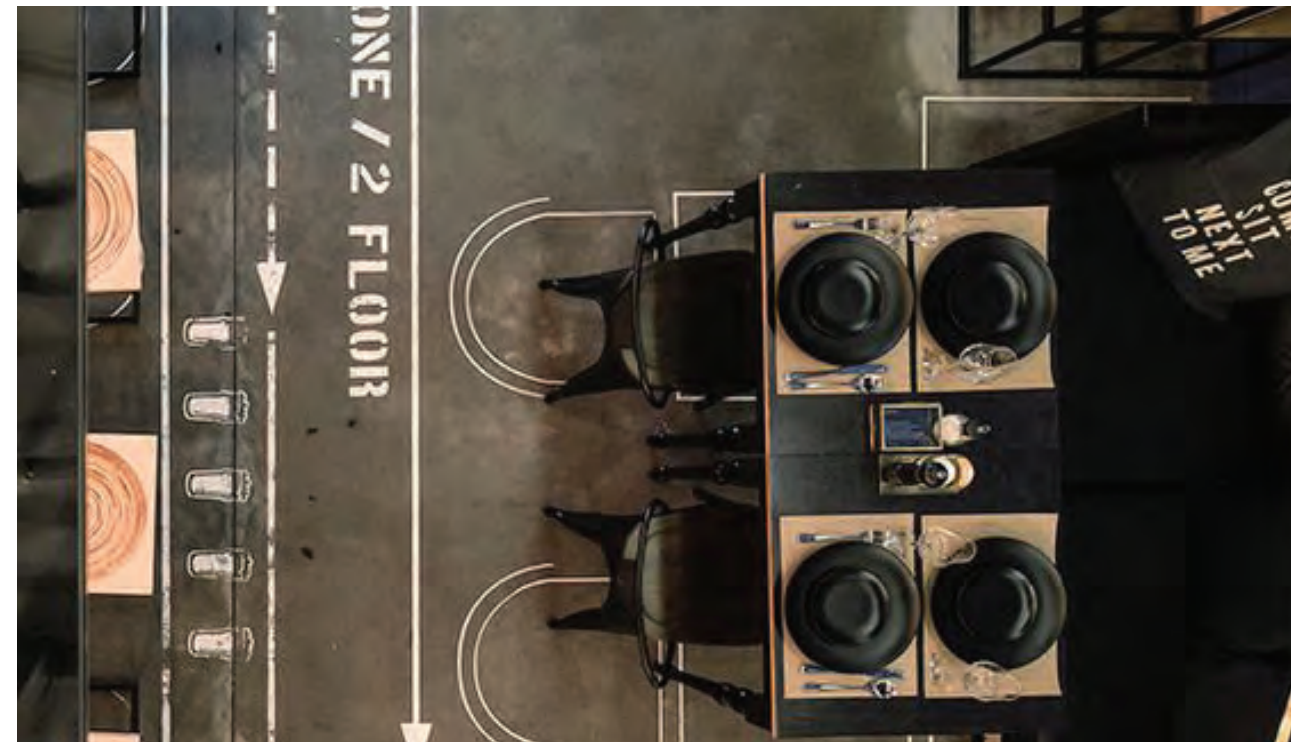
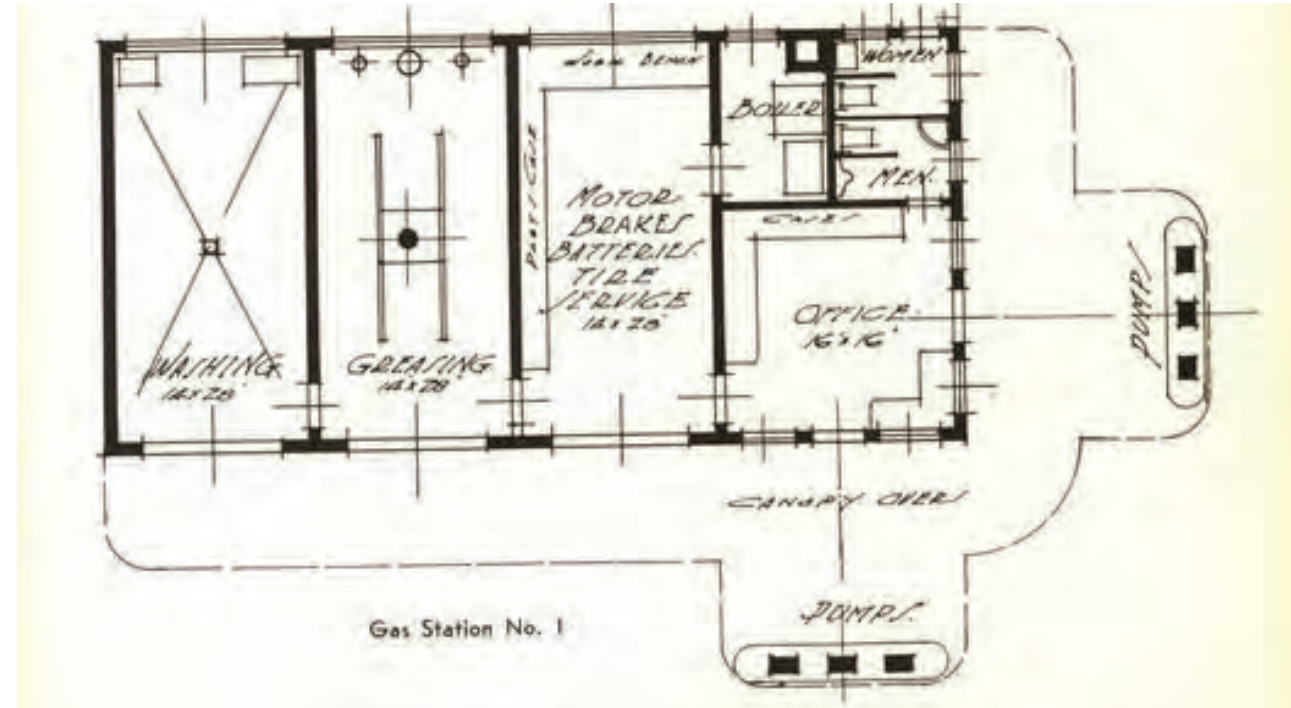
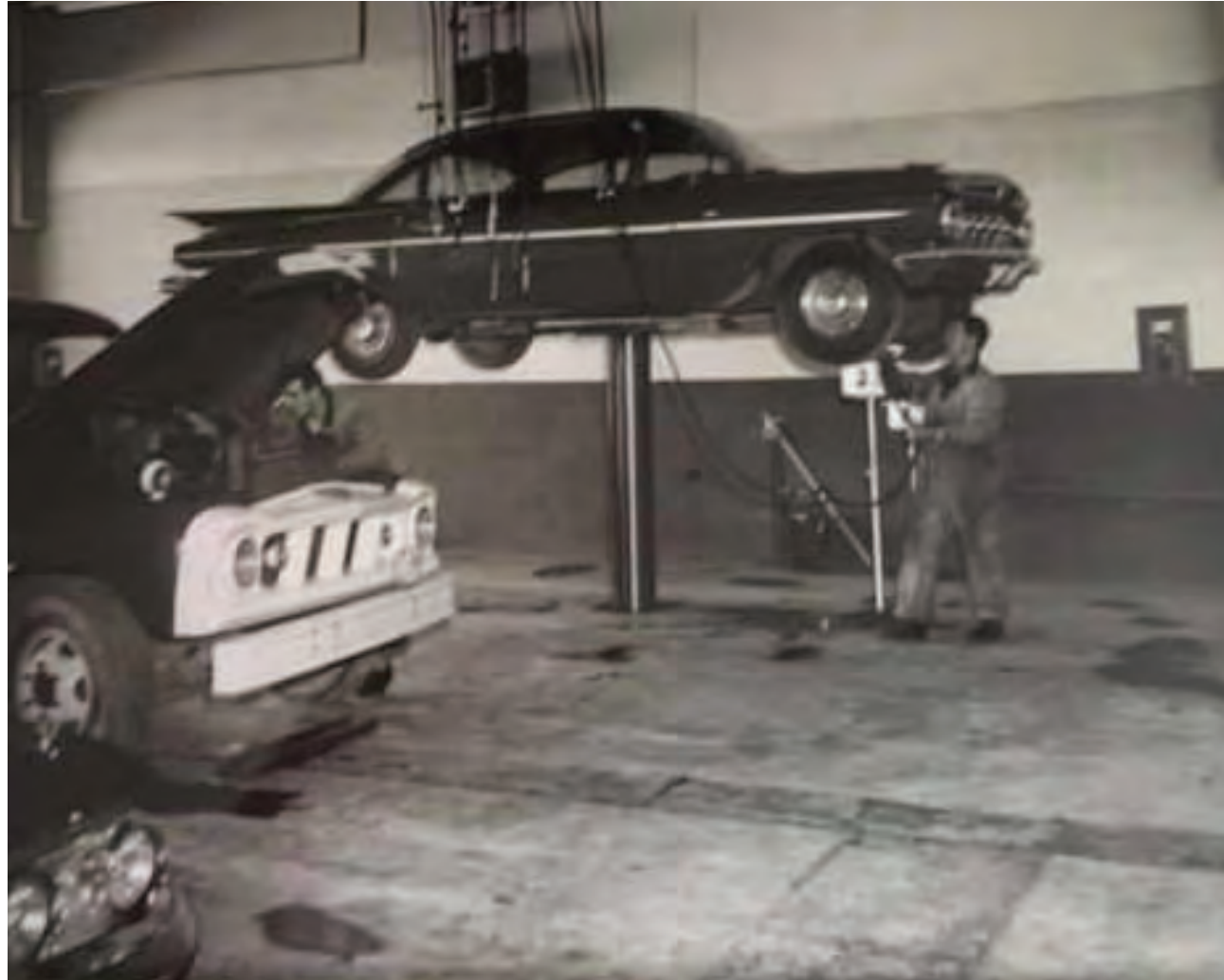
3.1 Schematic Exterior Inspiration at New Gower



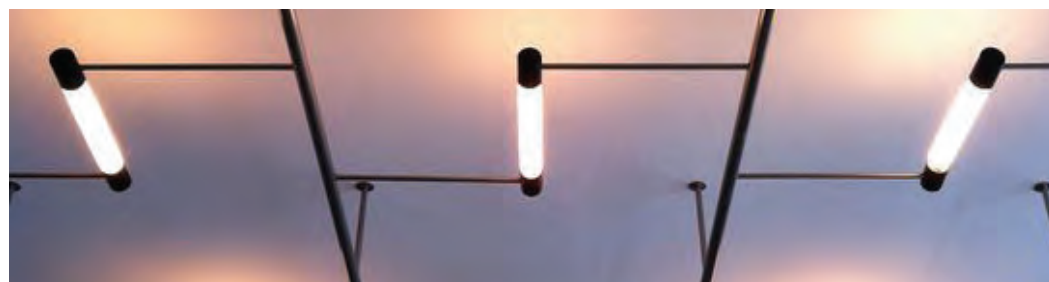
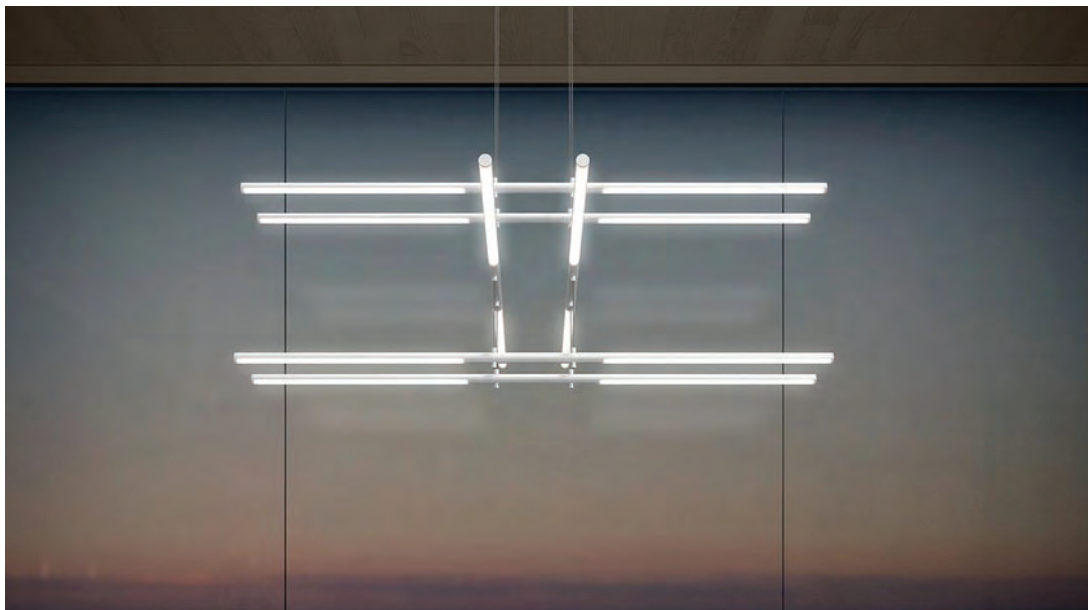
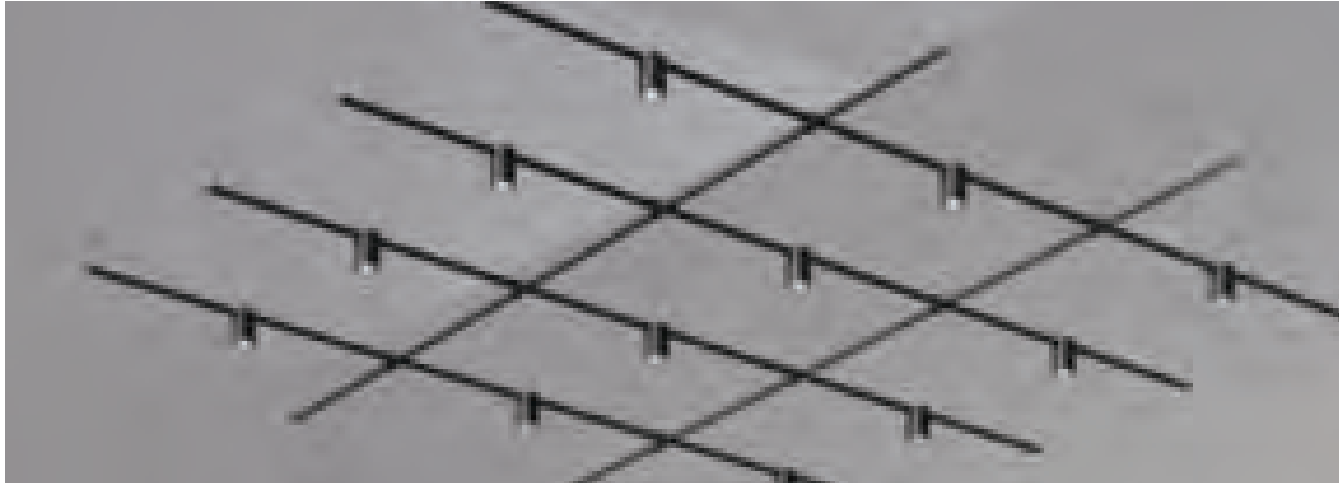
3.2 Interior Schematic - Brewery



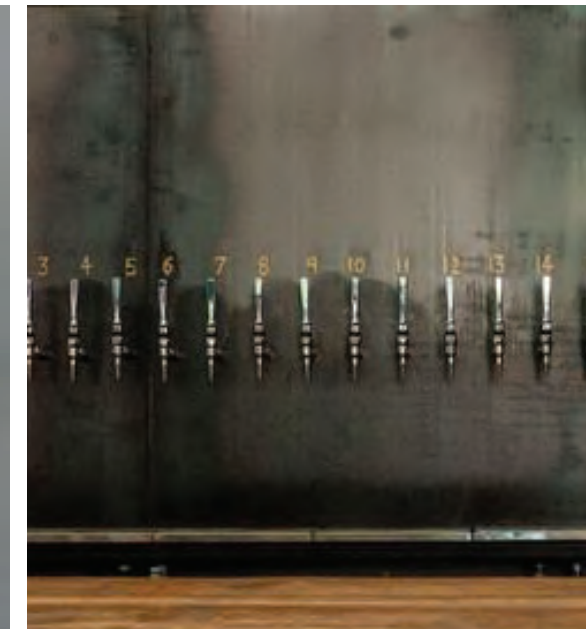
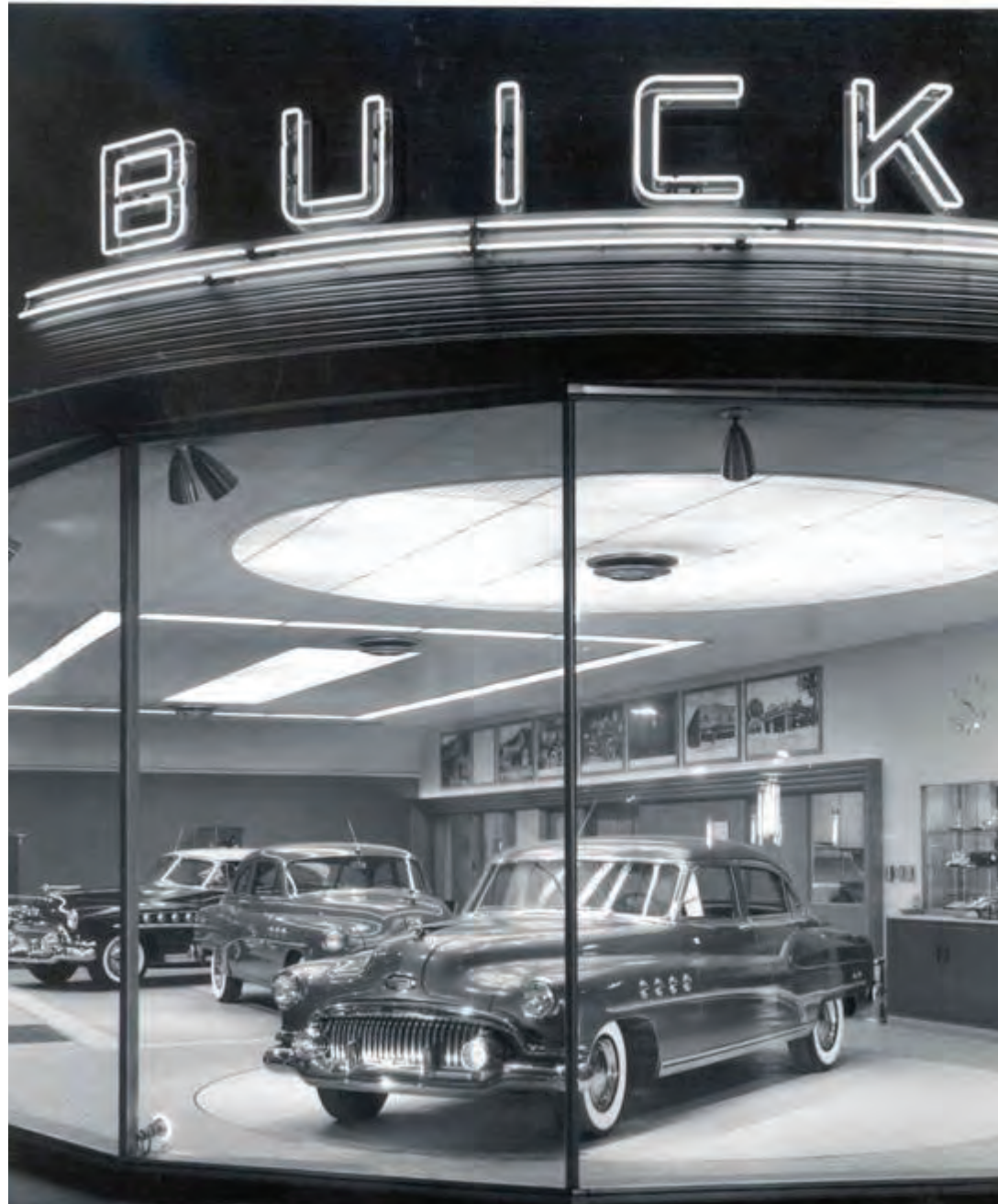
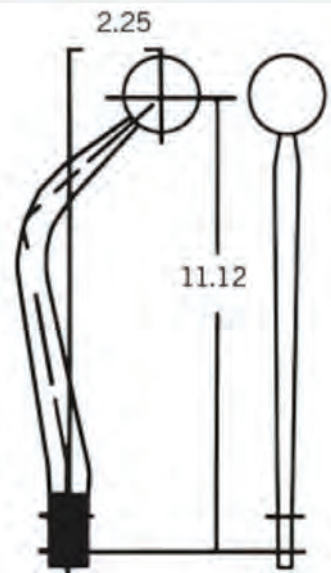
3.3 Interior Schematic - Brewery



3.4 Interior Schematic - Lighting



3.5 Interior Schematic -Vehicle Design Details



4.1 Existing Site Photos - Exterior



4.2 Existing Site Photos - Interior Level 1



4.3 Existing Site Photos - Interior Level 2

